



P R I M E R E S I D E N T I A L

P R E S E N T S

Eleven Acre Rise, Loughton



Eleven Acre Rise, Loughton

“ Elliott James are delighted to welcome to the market this wonderful four bedroom detached family home on one of Loughton's most premium cul-de-sacs.

With an impressive plot size spanning over 200 feet from front to back this rare opportunity has fantastic potential to be extended subject to the usual planning consents. The frontage alone has a width of 54 feet and the internal accommodation accumulates to nearly 3,000 SQ FT. The ground floor comprises of the grand entrance hall, downstairs cloakroom, dining room, large lounge, generous kitchen and integral double garage. The first floor comprises of four double bedrooms and family bathroom. There is an additional lower ground floor which provides a spacious games room and ample storage.

To the rear, the property features a spacious private garden made up of laid to lawn, planted borders and elevated patio perfect for alfresco dining. The garden offers over 125 feet in length and like the home offers superb potential. There is ample off street parking provided by a pathed drive for up to six cars.

Viewings are strictly by appointment only so please contact us on 0208 0165 333 or contact@ejpr.co.uk to arrange a viewing for your next home.

”

With over 15 years of personal local experience in both independent and corporate agencies it has been my passion to bring seamless integration of the latest property technology to our new agency. Our unique Partnership sets us apart as market leaders.



An unrestricted fully immersive walkthrough is available in our EIJ Business Lounge by arrangement. Restricted walkthrough access is available on our website through your smartphone or desktop.

Elliott Lawlor MNAEA & MARLA

contact@ejpr.co.uk

0208 0165 333

N
E
E
D

T
O

K
N
O
W

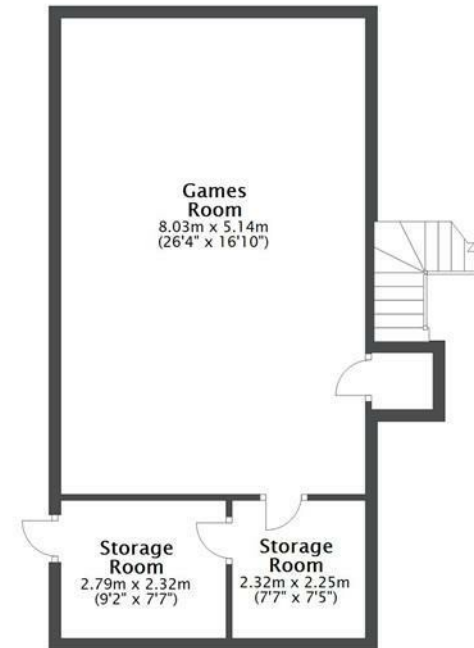
Sqft 2857.90 sq ft	Type House - Detached	Style New Home
Bedrooms 4	Receptions 2	Bathrooms 2
Tenure Freehold	Local Authority Epping Forest	Tax Band G

PLANS

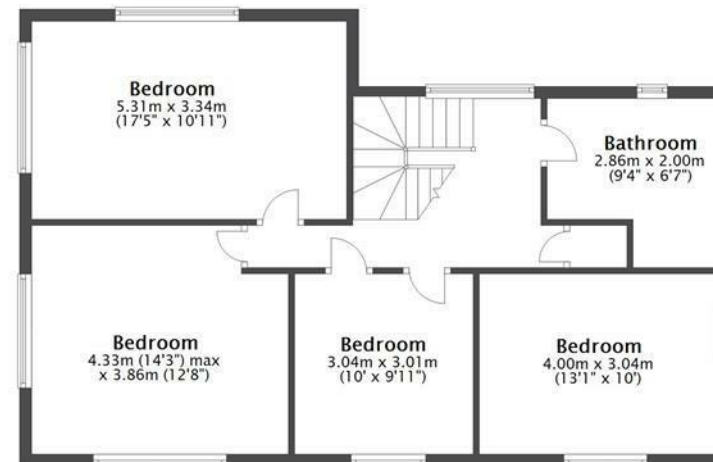
Ground Floor
Approx. 134.6 sq. metres (1449.1 sq. feet)



Lower Ground Floor
Approx. 54.8 sq. metres (589.5 sq. feet)

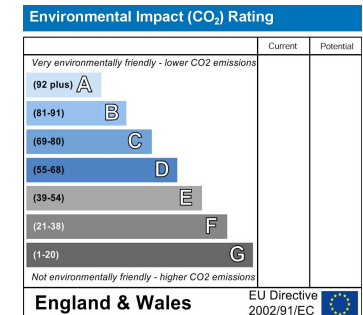
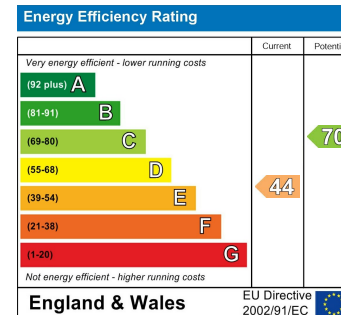
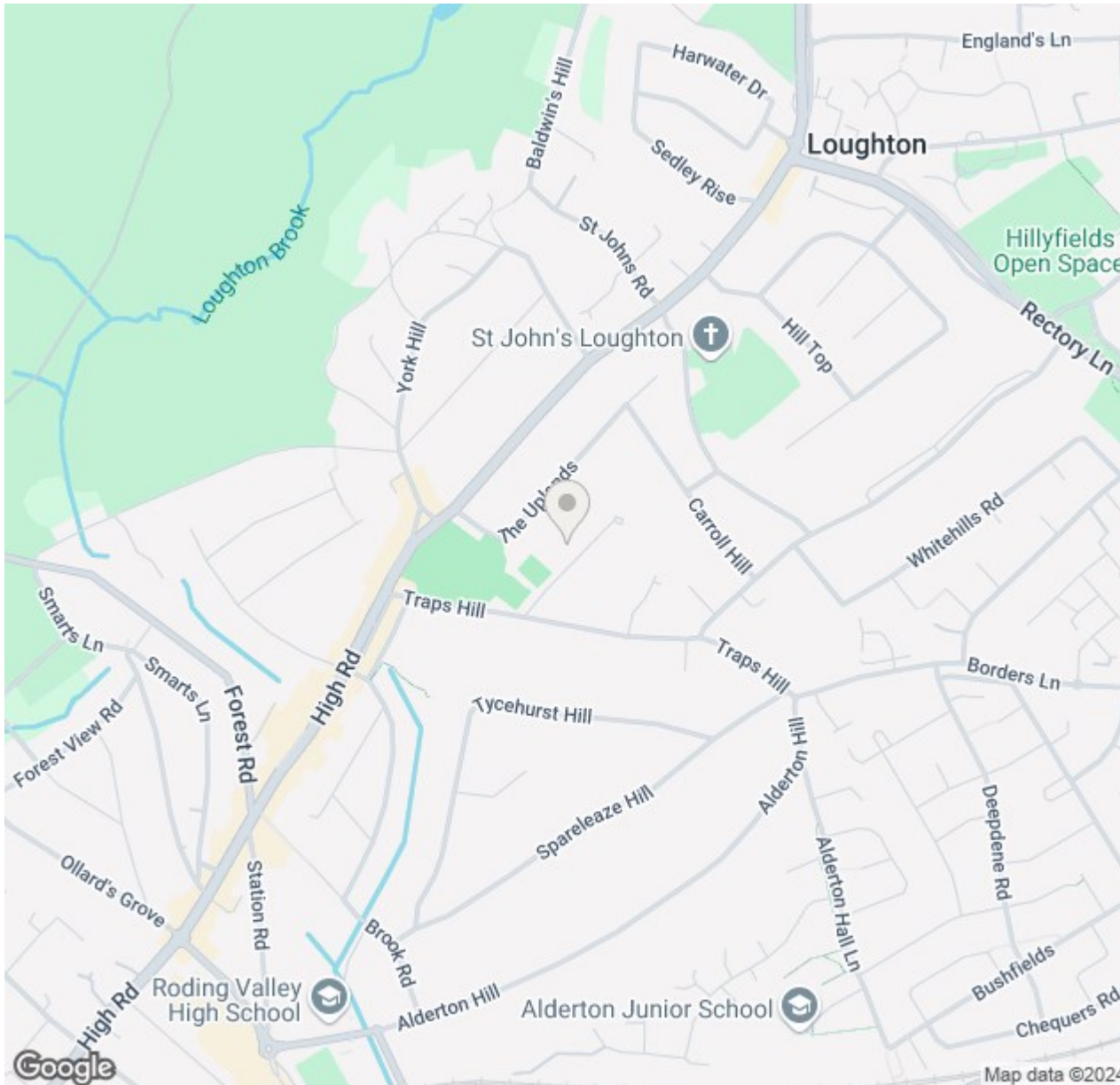


First Floor
Approx. 76.1 sq. metres (819.3 sq. feet)





MAP & EPC



elliott  james

165 | High Road | Loughton | IG10 4LF

Contact Us : 0208 0165 333 | contact@ejpr.co.uk

Follow us on social media | Search 'ejpr165'



These particulars have been prepared with approximate measurements in good faith by Elliott James – Prime Residential with the assistance of the vendor. The intention is to provide a fair and accurate guide to the property. These details do not constitute or form any part of an offer or contract. All interested parties must verify for themselves the accuracy of the information provided. The structural condition of the property or the condition of the heating, plumbing or electrical installations or any appliances have not been checked or tested and suitable investigations by interested parties should be conducted prior to purchase.