



P R I M E R E S I D E N T I A L

P R E S E N T S

High Road, Loughton



elliott E|J

165A

GINGER PIG

elliott E|J james

M&
FOODHA

High Road, Loughton



Elliott James Prime Residential are proud to showcase this charming apartment located on High Road in the desirable area of Loughton. This second-floor apartment boasts one reception room, one bedroom, and a well-appointed bathroom, making it the perfect cosy retreat for a single professional or a couple.

As you step into the apartment, you'll be greeted by an abundance of natural light that fills the space, creating a warm and inviting atmosphere. The property is incredibly spacious, offering ample room for comfortable living without feeling cramped.

One of the standout features of this apartment is the large private balcony, where you can enjoy your morning coffee or unwind after a long day while taking in the views of the surrounding area. The balcony provides the perfect spot for al fresco dining or simply soaking up the sunshine on a lazy weekend.

Convenience is key in this complex, with lift access making it easy to reach your apartment without the hassle of stairs. The apartment comes unfurnished, allowing you the freedom to decorate and style the space to your taste and preferences.

Don't miss out on the opportunity to make this lovely apartment your new home. With its prime location, generous living space, and charming balcony, this property offers a wonderful place to create new memories and enjoy the best that Loughton has to offer.



The property market has always interested me and seeing the reaction when someone finds their next home is something that really drives me to go above and beyond. I have a pride in my local area having grown up here, this also allowed me to grow a strong knowledge of the local community. With experience in the role already I look to provide a service to both buyers and sellers in which communication and transparency are key. I am incredibly proud to be a part of such a brilliant team dedicated to providing bespoke service to such a beautiful community.



An unrestricted fully immersive walkthrough is available in our E|J Business Lounge by arrangement. Restricted walkthrough access is available on our website through your smartphone or desktop.

Daniel Thomas
contact@ejpr.co.uk
0208 0165 333

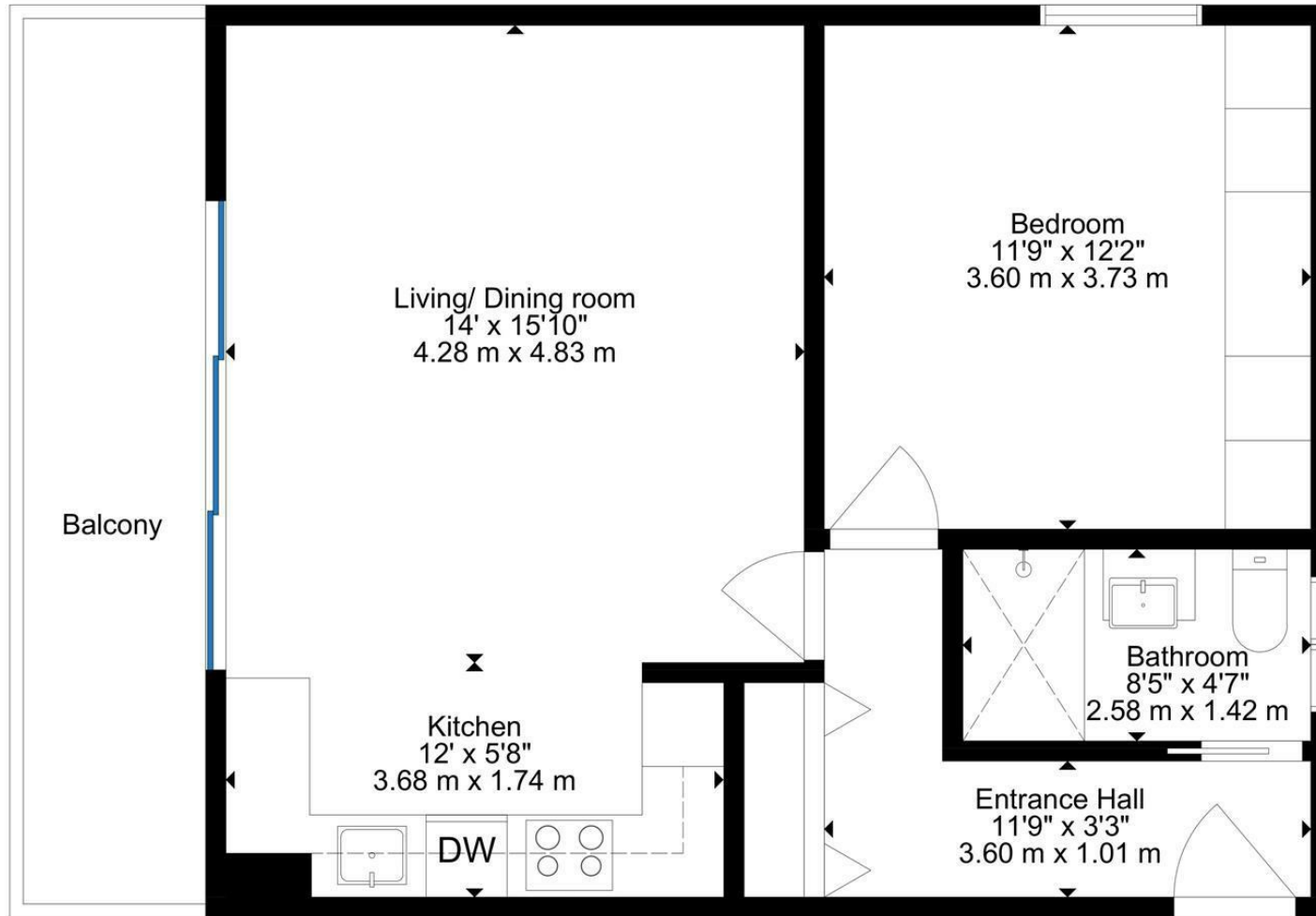
N
E
E
D

T
O

K
N
O
W

Sqft 568.00 sq ft	Type Apartment - Third Floor	Style New Home
Bedrooms 1	Receptions 1	Bathrooms 1
Tenure	Local Authority Epping Forest	Tax Band New Build

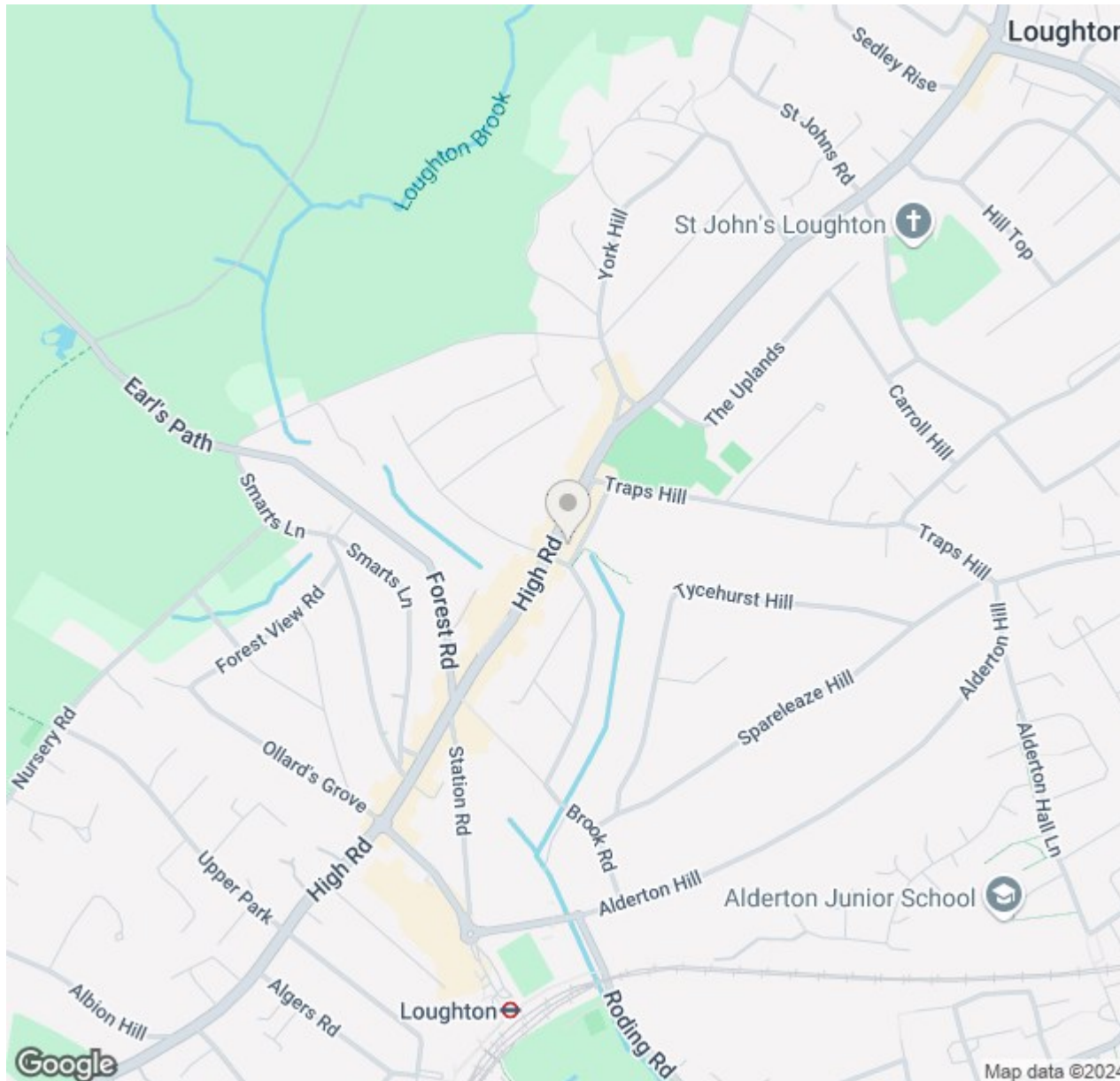
PLANS



GROSS INTERNAL AREA
TOTAL: 52 m², 568 SQ FT
SIZE AND DIMENSIONS ARE APPROXIMATE, ACTUAL MAY VARY



MAP & EPC



Energy Efficiency Rating		Current	Potential
Very energy efficient - lower running costs	(92 plus) A		
(81-91) B		82	82
(69-80) C			
(55-68) D			
(39-54) E			
(21-38) F			
(1-20) G			
Not energy efficient - higher running costs			
England & Wales		EU Directive 2002/91/EC	

Environmental Impact (CO ₂) Rating		Current	Potential
Very environmentally friendly - lower CO ₂ emissions	(92 plus) A		
(81-91) B			
(69-80) C			
(55-68) D			
(39-54) E			
(21-38) F			
(1-20) G			
Not environmentally friendly - higher CO ₂ emissions			
England & Wales		EU Directive 2002/91/EC	

elliott **E | J** james

165 | High Road | Loughton | IG10 4LF

Contact Us : 0208 0165 333 | contact@ejpr.co.uk

Follow us on social media | Search 'ejpr165'



These particulars have been prepared with approximate measurements in good faith by Elliott James – Prime Residential with the assistance of the vendor. The intention is to provide a fair and accurate guide to the property. These details do not constitute or form any part of an offer or contract. All interested parties must verify for themselves the accuracy of the information provided. The structural condition of the property or the condition of the heating, plumbing or electrical installations or any appliances have not been checked or tested and suitable investigations by interested parties should be conducted prior to purchase.