



P R I M E R E S I D E N T I A L

P R E S E N T S

Gladstone Road, Buckhurst Hill



8  
3

## Gladstone Road, Buckhurst Hill



Nestled on Gladstone Road in the picturesque Buckhurst Hill, this charming two-bedroom semi-detached bungalow is a true gem. Built in 1875, this property exudes character with its delightful features, such as its stunning beams and beautiful fireplace offering a cosy and inviting atmosphere.

Offering 624 square foot of living space, this bungalow is perfect for those seeking a comfortable home with a touch of nostalgia. The property features one bathroom, ideal for a small family or those looking for a peaceful retreat.

One of the standout features of this property is its proximity to the forest, allowing nature lovers to immerse themselves in the beauty of the outdoors right on their doorstep. Additionally, being close to local amenities ensures convenience and easy access to everyday essentials.

Offered CHAIN FREE, this bungalow presents a fantastic opportunity for those looking to make a hassle-free move to a desirable location. Don't miss out on the chance to own a special and rare bungalow in Buckhurst Hill. Viewings are strictly by appointment only so please contact us on 0208 0165 333 to arrange your next viewing!



---

The property market has always interested me and seeing the reaction when someone finds their next home is something that really drives me to go above and beyond. I have a pride in my local area having grown up here, this also allowed me to grow a strong knowledge of the local community. With experience in the role already I look to provide a service to both buyers and sellers in which communication and transparency are key. I am incredibly proud to be a part of such a brilliant team dedicated to providing bespoke service to such a beautiful community.



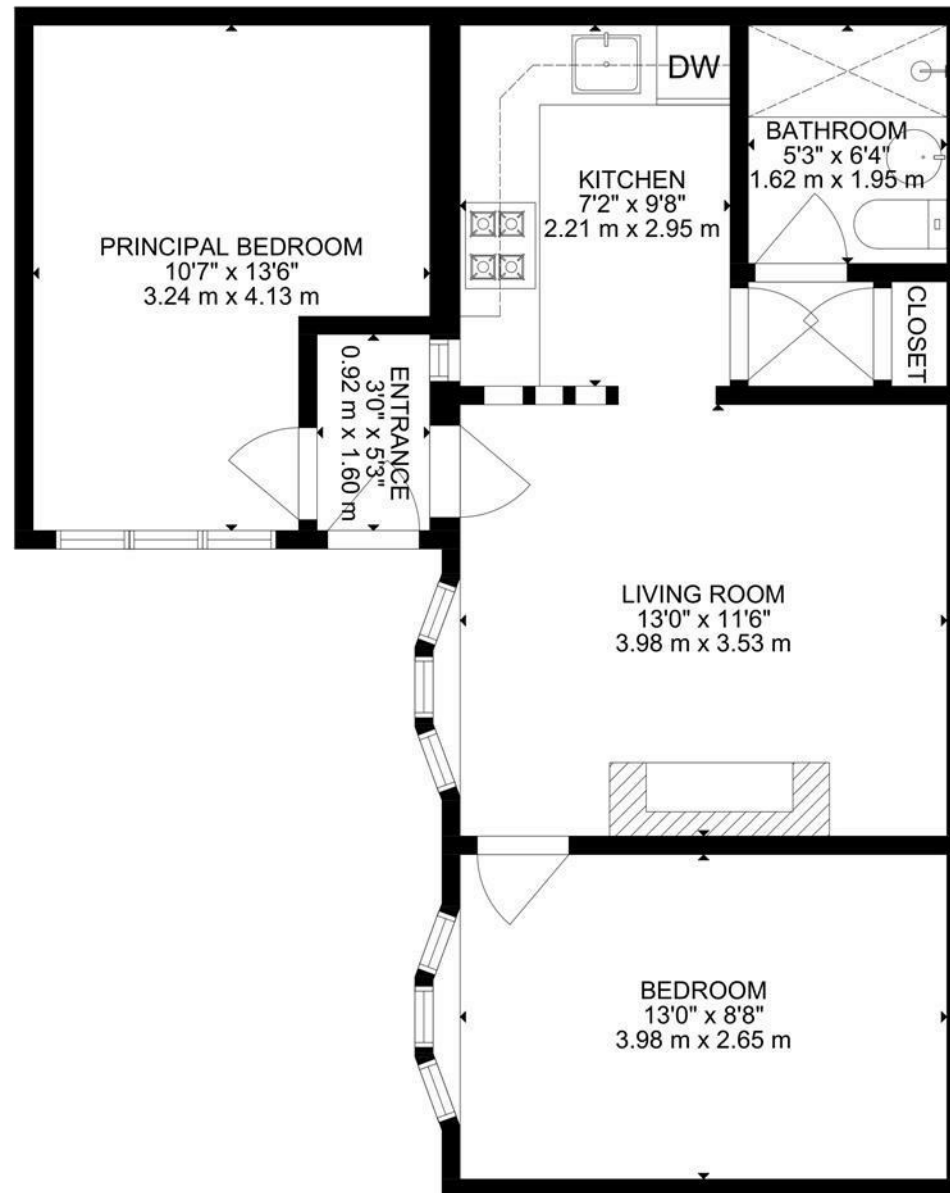
An unrestricted fully immersive walkthrough is available in our E|J Business Lounge by arrangement. Restricted walkthrough access is available on our website through your smartphone or desktop.

**Daniel Thomas**  
[contact@ejpr.co.uk](mailto:contact@ejpr.co.uk)  
0208 0165 333

N  
E  
E  
D  
  
T  
O  
  
K  
N  
O  
W

Sqft 624.00 sq ft	Type Bungalow - Semi Detached	Style 1980's
Bedrooms 2	Receptions 1	Bathrooms 1
Tenure Freehold	Local Authority Epping Forest	Tax Band C

# PLANS



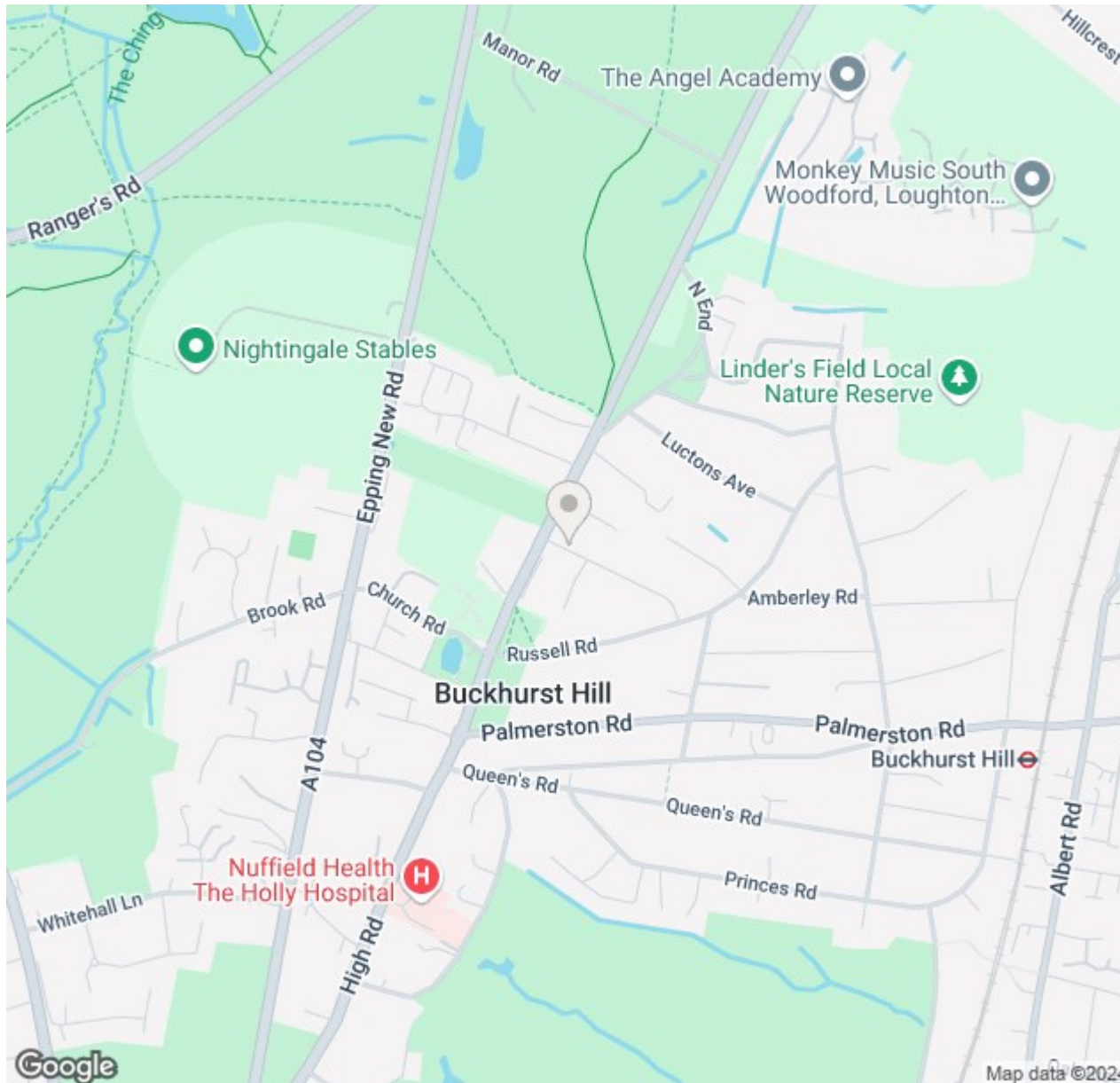
GROSS INTERNAL AREA

TOTAL: 624 SQ FT, 58 m<sup>2</sup>

SIZE AND DIMENSIONS ARE APPROXIMATE, ACTUAL MAY VARY



# MAP & EPC



Energy Efficiency Rating		Current	Potential
Very energy efficient - lower running costs	(92 plus) <b>A</b>		86
	(81-91) <b>B</b>		
	(69-80) <b>C</b>		
	(55-68) <b>D</b>	63	
	(39-54) <b>E</b>		
	(21-38) <b>F</b>		
	(1-20) <b>G</b>		
Not energy efficient - higher running costs			
<b>England &amp; Wales</b>		EU Directive 2002/91/EC	

Environmental Impact (CO <sub>2</sub> ) Rating		Current	Potential
Very environmentally friendly - lower CO <sub>2</sub> emissions	(92 plus) <b>A</b>		
	(81-91) <b>B</b>		
	(69-80) <b>C</b>		
	(55-68) <b>D</b>		
	(39-54) <b>E</b>		
	(21-38) <b>F</b>		
	(1-20) <b>G</b>		
Not environmentally friendly - higher CO <sub>2</sub> emissions			
<b>England &amp; Wales</b>		EU Directive 2002/91/EC	

elliott  james

165 | High Road | Loughton | IG10 4LF

Contact Us : 0208 0165 333 | [contact@ejpr.co.uk](mailto:contact@ejpr.co.uk)

Follow us on social media | Search 'ejpr165'



These particulars have been prepared with approximate measurements in good faith by Elliott James – Prime Residential with the assistance of the vendor. The intention is to provide a fair and accurate guide to the property. These details do not constitute or form any part of an offer or contract. All interested parties must verify for themselves the accuracy of the information provided. The structural condition of the property or the condition of the heating, plumbing or electrical installations or any appliances have not been checked or tested and suitable investigations by interested parties should be conducted prior to purchase.