



P R I M E R E S I D E N T I A L

P R E S E N T S

Treetops View, Loughton





elliott **E | J** james

PRIME RESIDENTIAL



## Treetops View, Loughton



Elliott James is delighted to welcome new to the market this exceptional four bedroom detached family home nestled within the exclusive Great Woodcote Park Development. This magnificent family home offers almost 4000 square feet of internal living space and has been recently renovated and extended to an exceptionally high specification.

The accommodation is arranged over two floors with the ground floor spanning over 2281 square feet. As you enter the property, you are greeted with a stunning grand entrance hall with glass chandelier. The open hallway leads through into the newly renovated open plan kitchen diner. This capacious room features a vaulted ceiling, large built-in dining room table/chairs, underfloor heating, bespoke cabinetry, and a separate utility room. The ground floor also features two separate living rooms both of which have access to the rear patio, a playroom/study, modern cloakroom, and high spec cinema room.

The bespoke wooden staircase leads to the first-floor landing where you are greeted with a wonderful view of the chandelier. You are immediately met by two double bedrooms that feature fitted wardrobes. There is another double bedroom with fitted wardrobes and a modern four-piece en suite. Across the landing, the property features the principal bedroom which has bespoke built-in wardrobes and a spacious dressing room with automatic lighting.

The front of the property has a large driveway which provides off street parking for several vehicles. To the rear, the property benefits from a large, secluded garden made up of two spacious patios, laid to lawn and planted borders. It also has a beautiful water feature, perfect for the summer months. The property will be offered to the market CHAIN FREE and viewings are strictly by appointment only.



---

With over 25 years of experience within the property industry I have a wealth of Knowledge and expertise in delivering exemplary and unsurpassed discretionary customer service to esteemed clientele.



**Heidi Foster MNAEA**  
contact@ejpr.co.uk  
0208 0165 333



An unrestricted fully immersive walkthrough is available in our E|J Business Lounge by arrangement. Restricted walkthrough access is available on our website through your smartphone or desktop.

N  
E  
E  
D  
  
T  
O  
  
K  
N  
O  
W

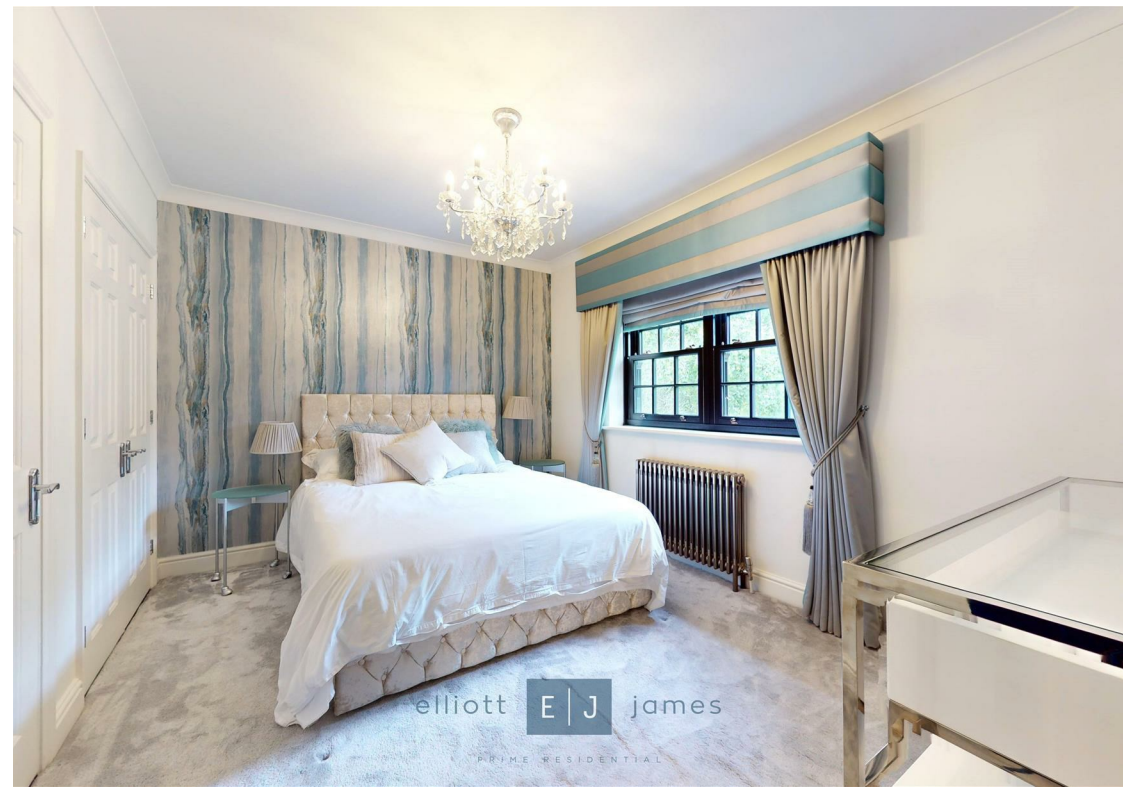
Sqft 3927.00 sq ft	Type House - Detached	Style Modern
Bedrooms 4	Receptions 4	Bathrooms 3
Tenure Freehold	Local Authority Epping Forest District Council	Tax Band H

# PLANS



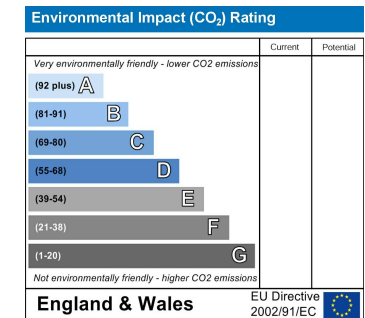
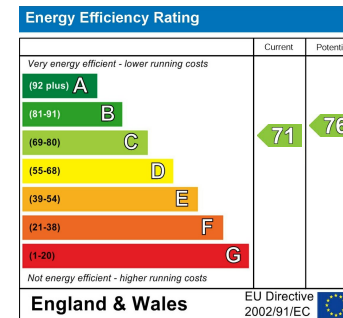
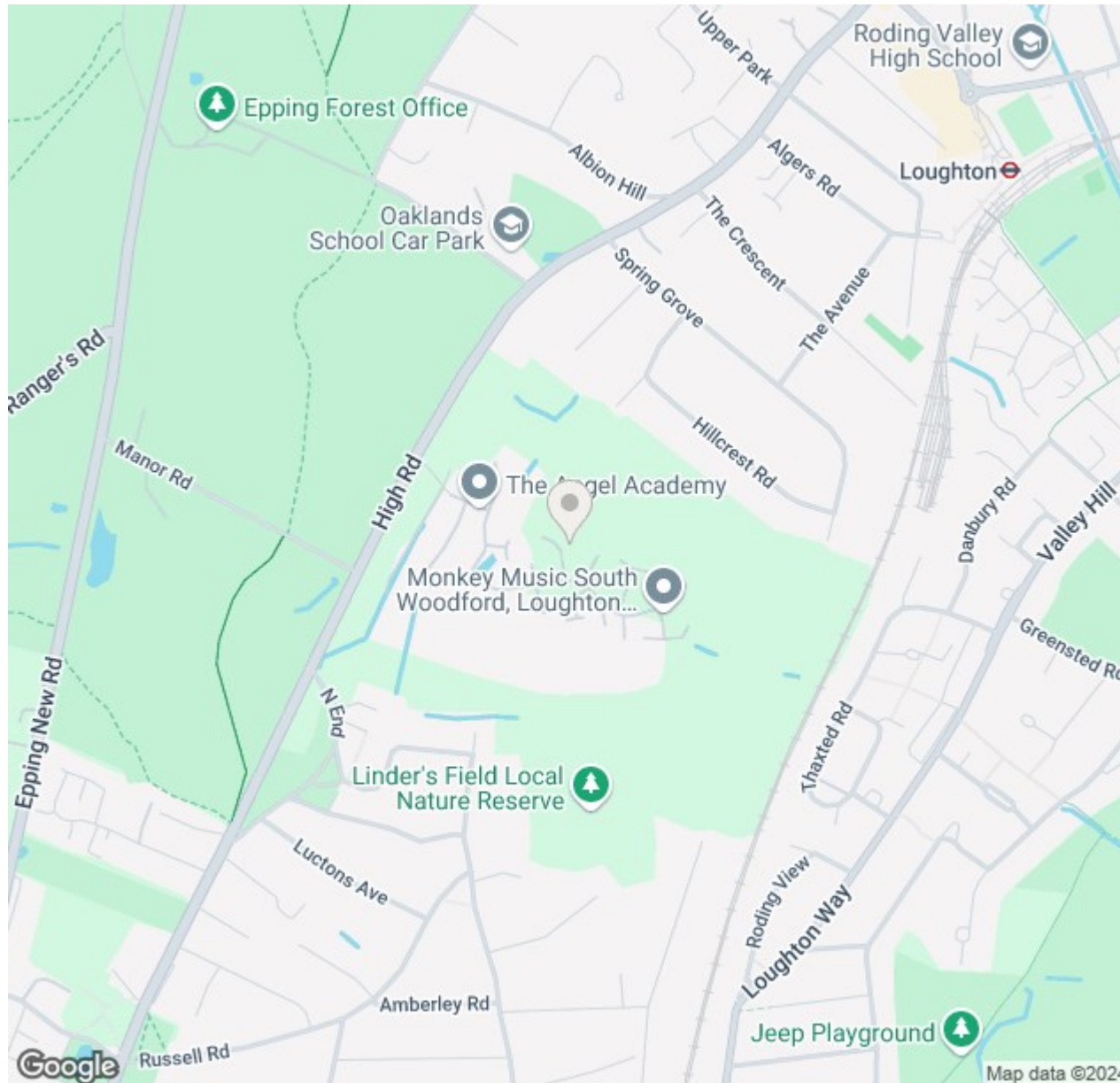
GROSS INTERNAL AREA  
 FLOOR 1: 2281 SQ FT, 212 m<sup>2</sup>, FLOOR 2: 1646 SQ FT, 153 m<sup>2</sup>  
 TOTAL: 3927 SQ FT, 365 m<sup>2</sup>  
 SIZE AND DIMENSIONS ARE APPROXIMATE, ACTUAL MAY VARY







# MAP & EPC



elliott  james

165 | High Road | Loughton | IG10 4LF

Contact Us : 0208 0165 333 | [contact@ejpr.co.uk](mailto:contact@ejpr.co.uk)

Follow us on social media | Search 'ejpr165'



These particulars have been prepared with approximate measurements in good faith by Elliott James – Prime Residential with the assistance of the vendor. The intention is to provide a fair and accurate guide to the property. These details do not constitute or form any part of an offer or contract. All interested parties must verify for themselves the accuracy of the information provided. The structural condition of the property or the condition of the heating, plumbing or electrical installations or any appliances have not been checked or tested and suitable investigations by interested parties should be conducted prior to purchase.