

elliott  james

P R I M E R E S I D E N T I A L

P R E S E N T S

Roding Court
Lower Park Road
Loughton



LOWER PARK ROAD

Roding Court, Lower Park Road, Loughton,



Elliott James Prime Residential are delighted to offer this stunning first floor two bedroom apartment developed by Higgins in 2013. Set in the heart of Loughton within walking distance to the High Road & Central Line Station, this is ideal for first time buyers, clients looking to downsize or investors.

The apartment comprises of a hallway, bright open plan living area, modern fully fitted kitchen with integrated appliances, master bedroom with fitted wardrobes and en-suite, second double bedroom with fitted wardrobes and family bathroom.

Further benefits include secure video entry phone system, allocated parking space, communal gardens and lift access to all floors.



The area has always been my home and I have a strong sense of integrating with the community. I am highly driven and motivated with a passion for property and new technology. Bringing a wealth of knowledge and an aim to move the marketing of property to another level I look forward to working personally with old and new clients.



Frankie Faulkner-Wild MNAEA

contact@ejpr.co.uk

0208 0165 333



An unrestricted fully immersive walkthrough is available in our EJJ Business Lounge by arrangement. Restricted walkthrough access is available on our website through your smartphone or desktop.

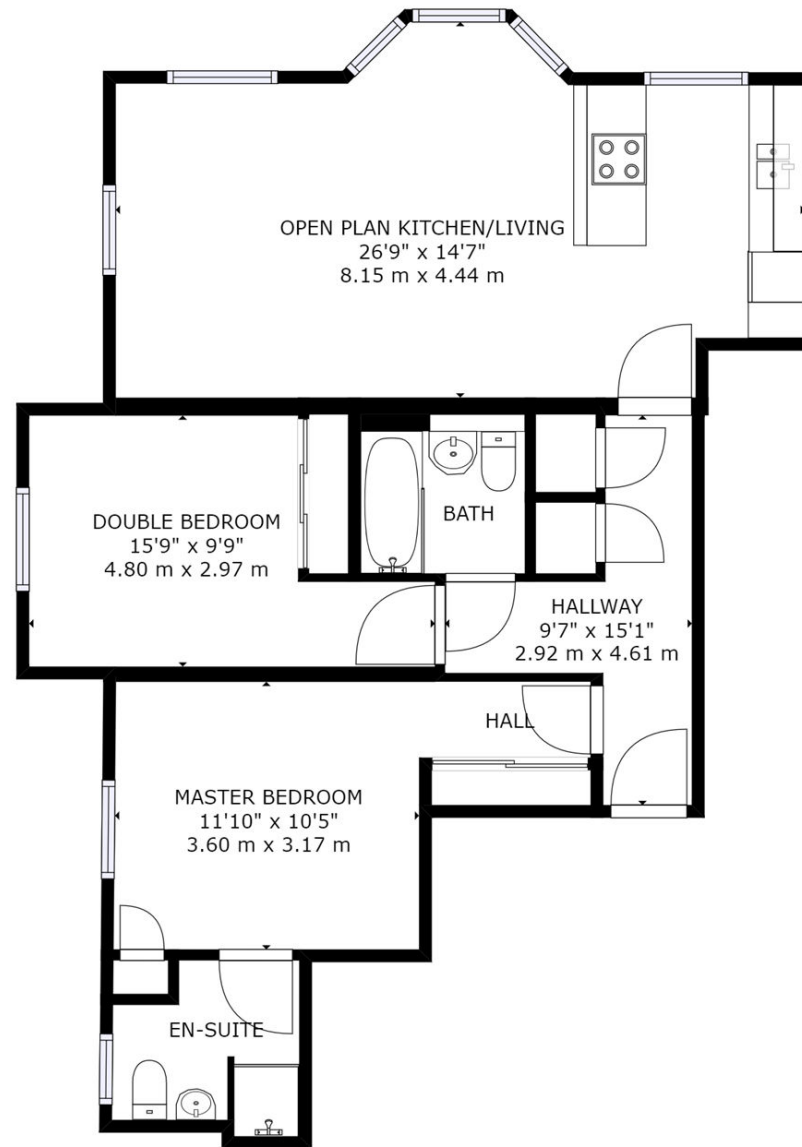
N
E
E
D

T
O

K
N
O
W

Sqft 832	Type Apartment	Style Modern
Bedrooms 2	Receptions 1	Bathrooms 2
Tenure Leasehold	Local Authority Epping Forest District Council	Tax Band Band E

PLANS

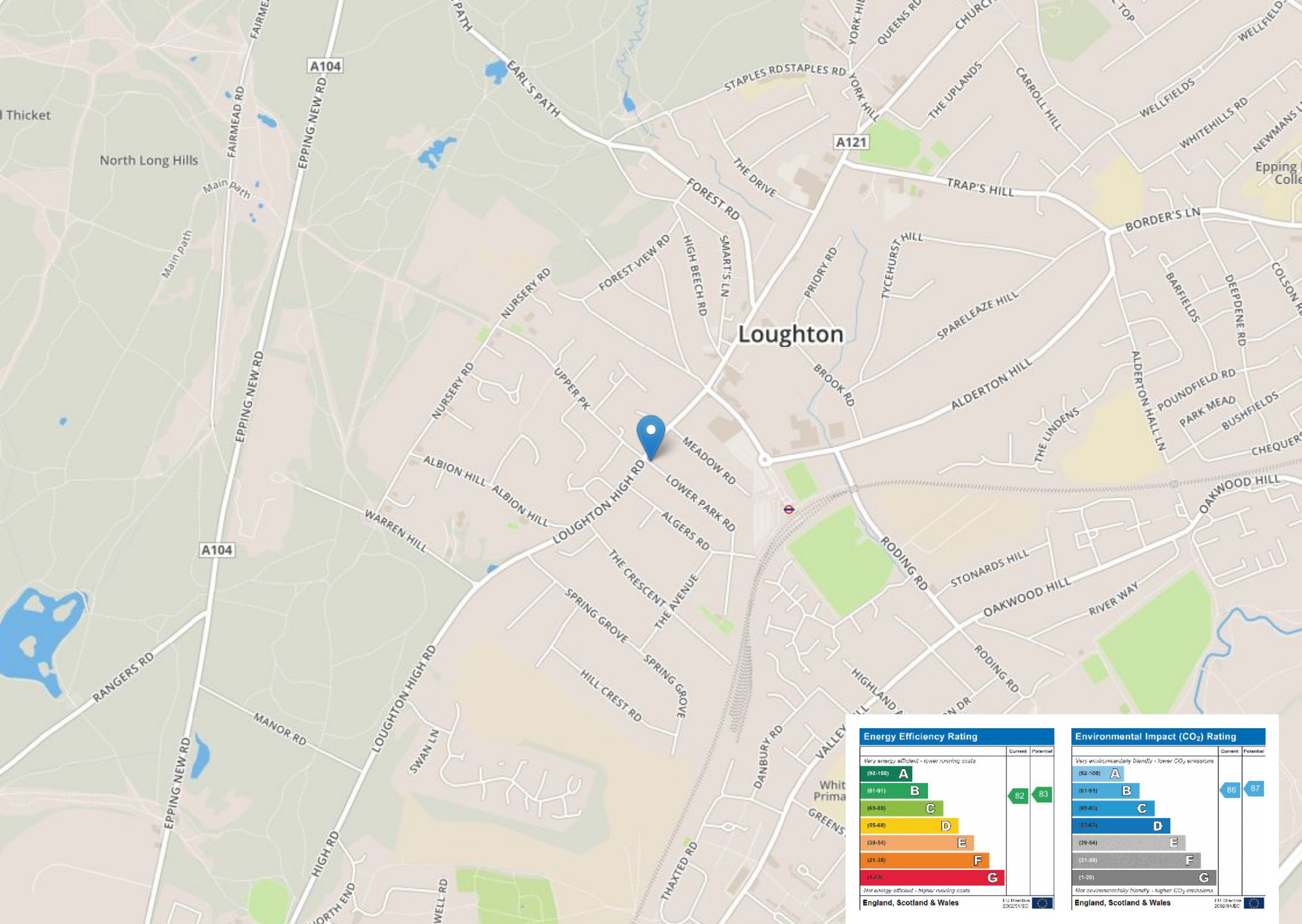


GROSS INTERNAL AREA
FLOOR 1: 832 sq ft, 77 m²
TOTAL: 832 sq ft, 77 m²

SIZES AND DIMENSIONS ARE APPROXIMATE, ACTUAL MAY VARY.

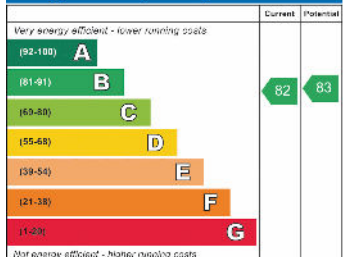
FLOOR 1





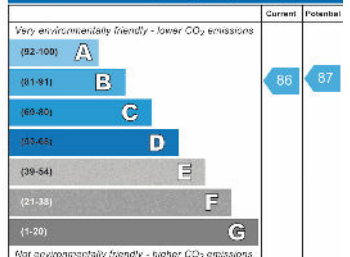
Loughton

Energy Efficiency Rating



England, Scotland & Wales

Environmental Impact (CO₂) Rating



England, Scotland & Wales

elliott  james

165 | High Road | Loughton | IG10 4LF

Contact Us : 0208 0165 333 | contact@ejpr.co.uk

Follow us on social media | Search 'ejpr165'



These particulars have been prepared with approximate measurements in good faith by Elliott James – Prime Residential with the assistance of the vendor. The intention is to provide a fair and accurate guide to the property. These details do not constitute or form any part of an offer or contract. All interested parties must verify for themselves the accuracy of the information provided. The structural condition of the property or the condition of the heating, plumbing or electrical installations or any appliances have not been checked or tested and suitable investigations by interested parties should be conducted prior to purchase.