



P R I M E R E S I D E N T I A L

P R E S E N T S

The Lindens, Loughton



The Lindens, Loughton



Offered to the market chain free is this extended and spacious four bedroom family home with double width garage and wraparound garden. Situated in a quiet cul-de-sac just a short distance to a choice of two central line stations, Loughton high street with its wide selection of eateries and local amenities.

The accommodation is arranged over two floors with the ground floor comprising of entrance hall, living room with patio doors giving access to the garden, cloakroom, fitted kitchen, dining area with patio doors providing further access to garden and a second reception room which is currently being used for a library/study. The first floor offers master bedroom with en-suite, three further bedrooms and a family bathroom. This property has further potential to extend subject to the usual planning consents.

Externally to the front of the property there is off street parking and a double width garage. To the rear there is a wraparound garden mainly laid to lawn with planting to borders.



With over 15 years of personal local experience in both independent and corporate agencies it has been my passion to bring seamless integration of the latest property technology to our new agency. Our unique Partnership sets us apart as market leaders.



An unrestricted fully immersive walkthrough is available in our E|J Business Lounge by arrangement. Restricted walkthrough access is available on our website through your smartphone or desktop.

Elliott Lawlor MNAEA & MARLA

contact@ejpr.co.uk

0208 0165 333

N
E
E
D

T
O

K
N
O
W

Sqft 1465.00 sq ft	Type House - Semi-	Style New Home
Bedrooms 4	Receptions 2	Bathrooms 2
Tenure Freehold	Local Authority Epping Forest District Council	Tax Band F

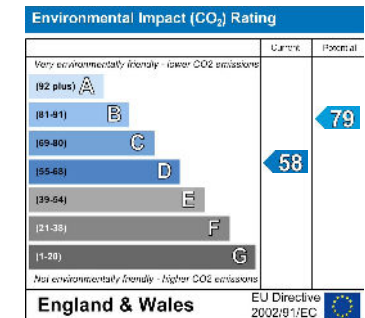
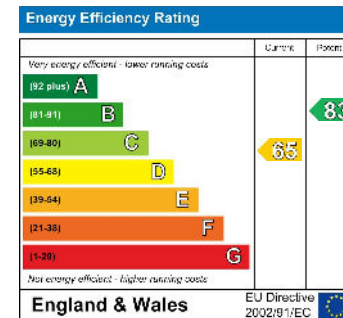
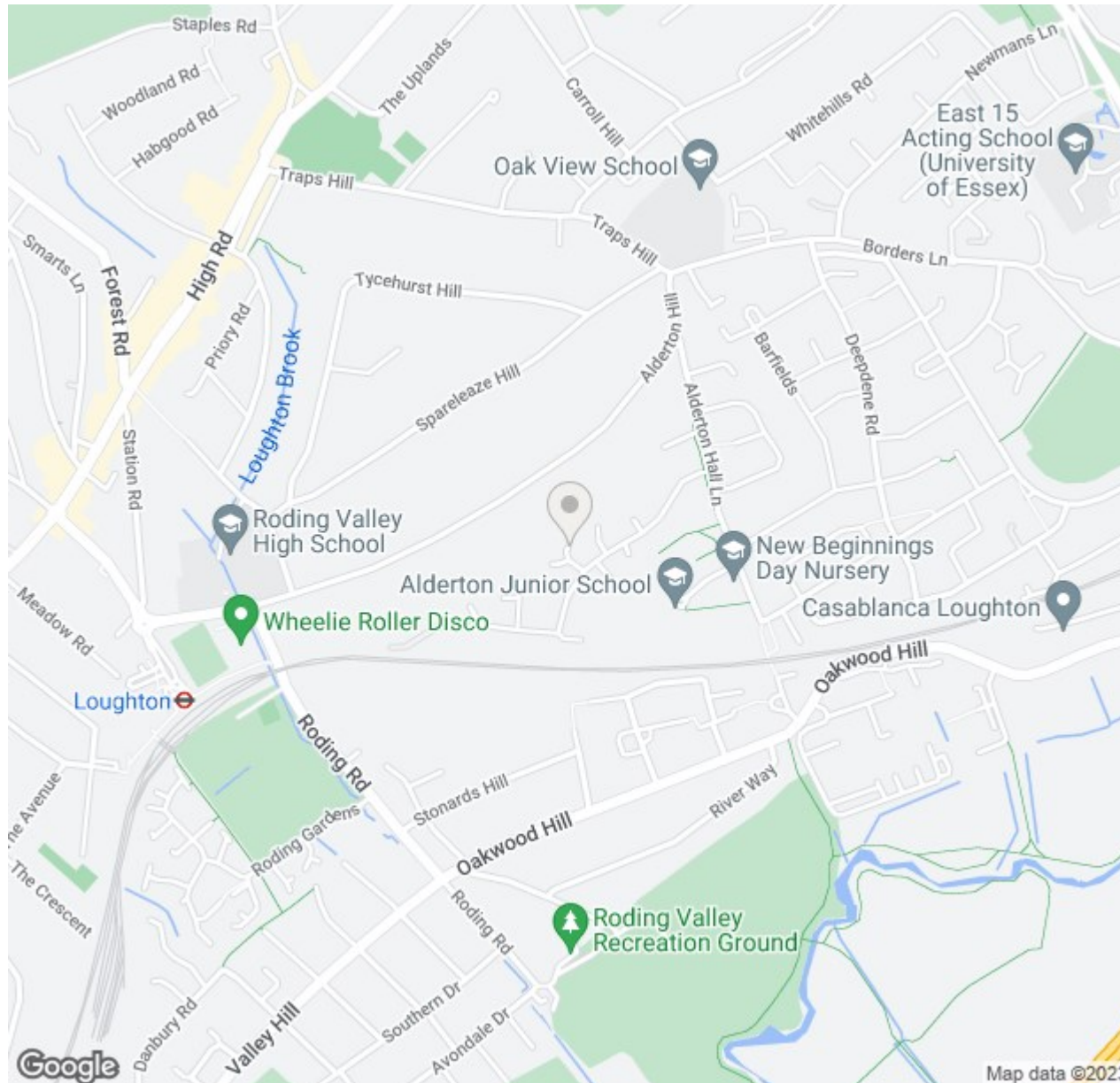






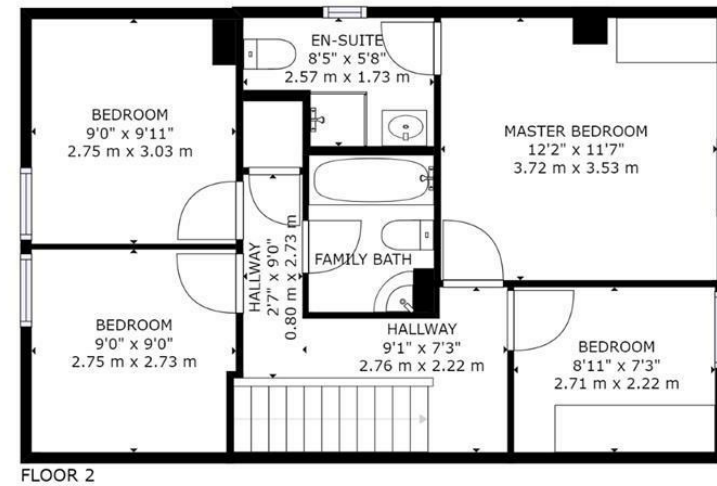
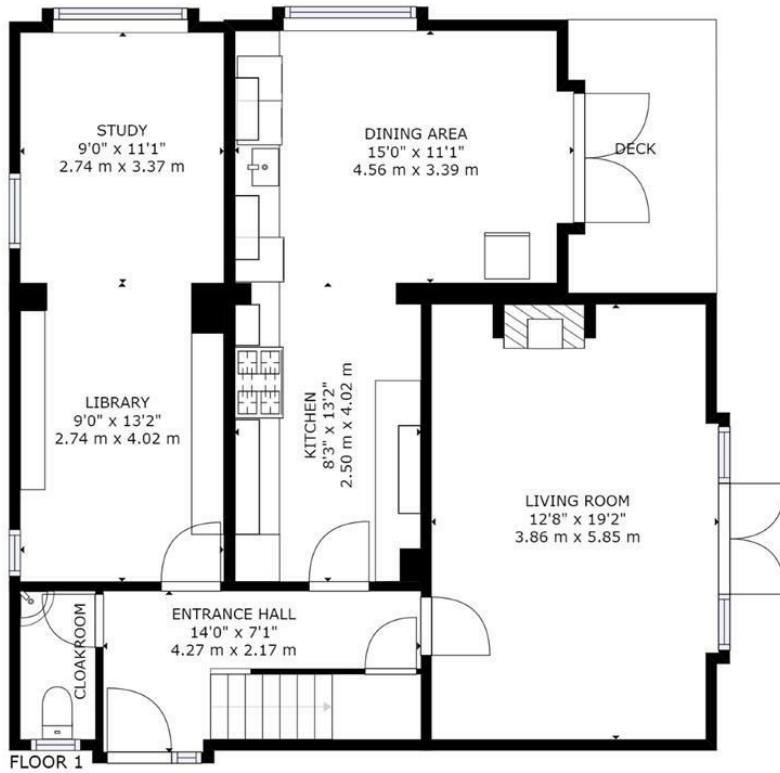


MAP & EPC





PLANS



GROSS INTERNAL AREA
 FLOOR 1: 886 sq ft, 82 m², FLOOR 2: 579 sq ft, 54 m²
 TOTAL: 1465 sq ft, 136 m²
 SIZES AND DIMENSIONS ARE APPROXIMATE, ACTUAL MAY VARY.

elliott  james

165 | High Road | Loughton | IG10 4LF

Contact Us : 0208 0165 333 | contact@ejpr.co.uk

Follow us on social media | Search 'ejpr165'



These particulars have been prepared with approximate measurements in good faith by Elliott James - Prime Residential with the assistance of the vendor. The intention is to provide a fair and accurate guide to the property. These details do not constitute or form any part of an offer or contract. All interested parties must verify for themselves the accuracy of the information provided. The structural condition of the property or the condition of the heating, plumbing or electrical installations or any appliances have not been checked or tested and suitable investigations by interested parties should be conducted prior to purchase.