



P R I M E R E S I D E N T I A L

P R E S E N T S

38 High Beech Road, Loughton



38 High Beech Road, Loughton



VIEWING SLOTS NOW AVAILABLE

Stunning brand new development of two semi-detached four-bedroom family homes. Conveniently located within walking distance to Loughton Central Line Station and on the doorstep of Epping Forest.

Estimated occupation August 2020.

Each house is priced at £850,000 and has 1,681 sq ft of internal space.

Further benefits include under floor heating throughout, Bosch fridge/freezer, dishwasher and washer/dryer.

Please note the CGI image and floor plans have been provided to display the internal covered living accommodation and external appearance. On completion there might be slight changes made from the original plans.

Please note the internal photos used are that of 38A High Beech Road, Loughton but is a fair reflection of the internal finish.



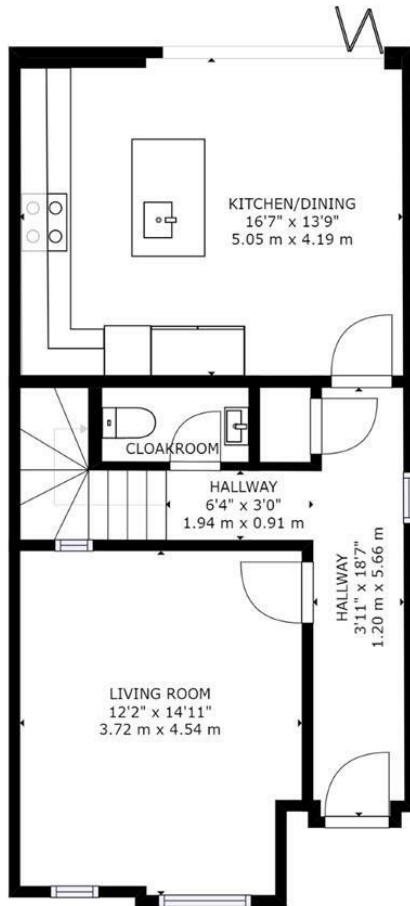
N
E
E
D

T
O

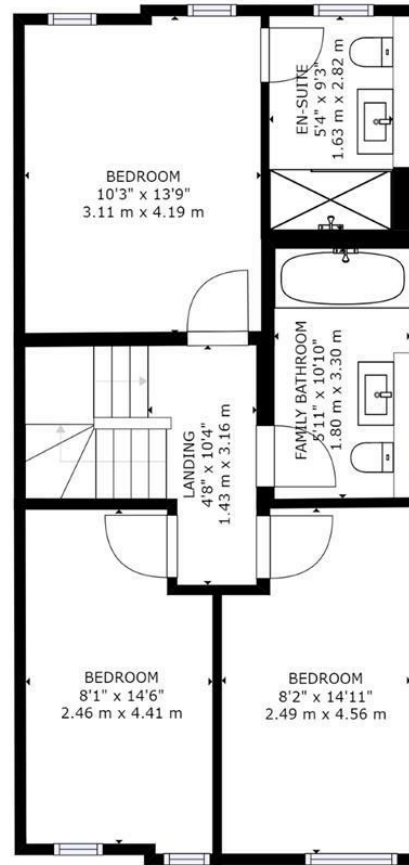
K
N
O
W

Sqft 1681.00 sq ft	Type House - Semi-Detached	Style New Home
Bedrooms 4	Receptions 2	Bathrooms 3
Tenure Freehold	Local Authority Epping Forest District Council	Tax Band TBC

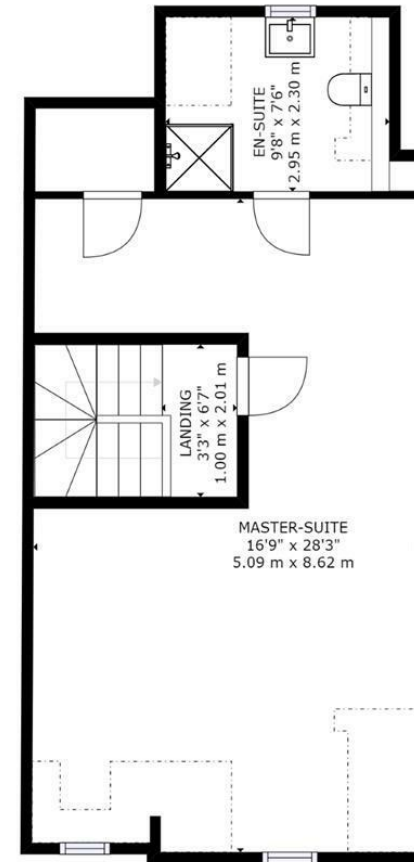
PLANS



FLOOR 1



FLOOR 2

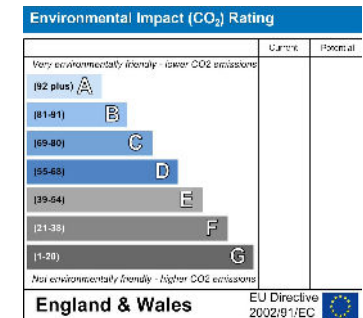
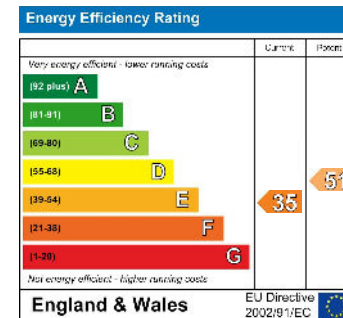


FLOOR 3

GROSS INTERNAL AREA
 FLOOR 1: 578 sq ft, 54 m², FLOOR 2: 600 sq ft, 56 m²
 FLOOR 3: 502 sq ft, 47 m², EXCLUDED AREAS:
 REDUCED HEADROOM BELOW 1.5M: 69 sq ft, 6 m²
 TOTAL: 1681 sq ft, 156 m²
 SIZES AND DIMENSIONS ARE APPROXIMATE, ACTUAL MAY VARY.



MAP & EPC



elliott  james

165 | High Road | Loughton | IG10 4LF

Contact Us : 0208 0165 333 | contact@ejpr.co.uk

Follow us on social media | Search 'ejpr165'



These particulars have been prepared with approximate measurements in good faith by Elliott James - Prime Residential with the assistance of the vendor. The intention is to provide a fair and accurate guide to the property. These details do not constitute or form any part of an offer or contract. All interested parties must verify for themselves the accuracy of the information provided. The structural condition of the property or the condition of the heating, plumbing or electrical installations or any appliances have not been checked or tested and suitable investigations by interested parties should be conducted prior to purchase.