



P R I M E R E S I D E N T I A L

P R E S E N T S

Trevelyan Gardens, Loughton



Trevelyan Gardens, Loughton



Elliott James is pleased to market this superb, well presented four-bedroom, three-bathroom modern house. Located in a peaceful cul-de-sac just off the highly sought after area of Goldings Hill, Trevelyan Gardens is a luxury gated development of just eight properties, each with two allocated parking spaces and further visitor parking.

The property is arranged over three floors. Ground floor comprises of open plan kitchen with integrated fitted appliances, living/dining area with bi-folding doors leading out to the low maintenance garden, study/TV room, storage cupboard and guest cloakroom. On the first floor there are three bedrooms, one of which has an en-suite shower room and a family bathroom. The second floor offers a bright master bedroom with dressing area and en-suite bathroom.

Externally the property has a smart rear garden with patio area and the rest laid to lawn.

Further benefits include external lights, rear electric plug sockets, solar panels and secure entry phone system.

Trevelyan Gardens is located moments from the wonderful Epping Forest and is within easy reach to Loughton or Debden Central Line stations.



With over 15 years of personal local experience in both independent and corporate agencies it has been my passion to bring seamless integration of the latest property technology to our new agency. Our unique Partnership sets us apart as market leaders.



An unrestricted fully immersive walkthrough is available in our E|J Business Lounge by arrangement. Restricted walkthrough access is available on our website through your smartphone or desktop.

Elliott Lawlor MNAEA & MARLA

contact@ejpr.co.uk

0208 0165 333

N
E
E
D

T
O

K
N
O
W

Sqft 1342.00 sq ft	Type House - Mid -	Style New Home
Bedrooms 4	Receptions 2	Bathrooms 3
Tenure Freehold	Local Authority Epping Forest Council	Tax Band F

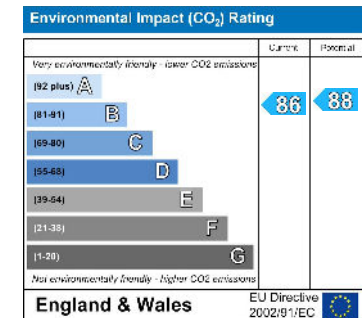
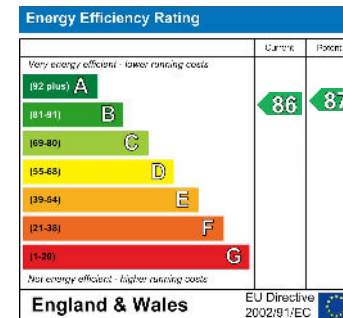
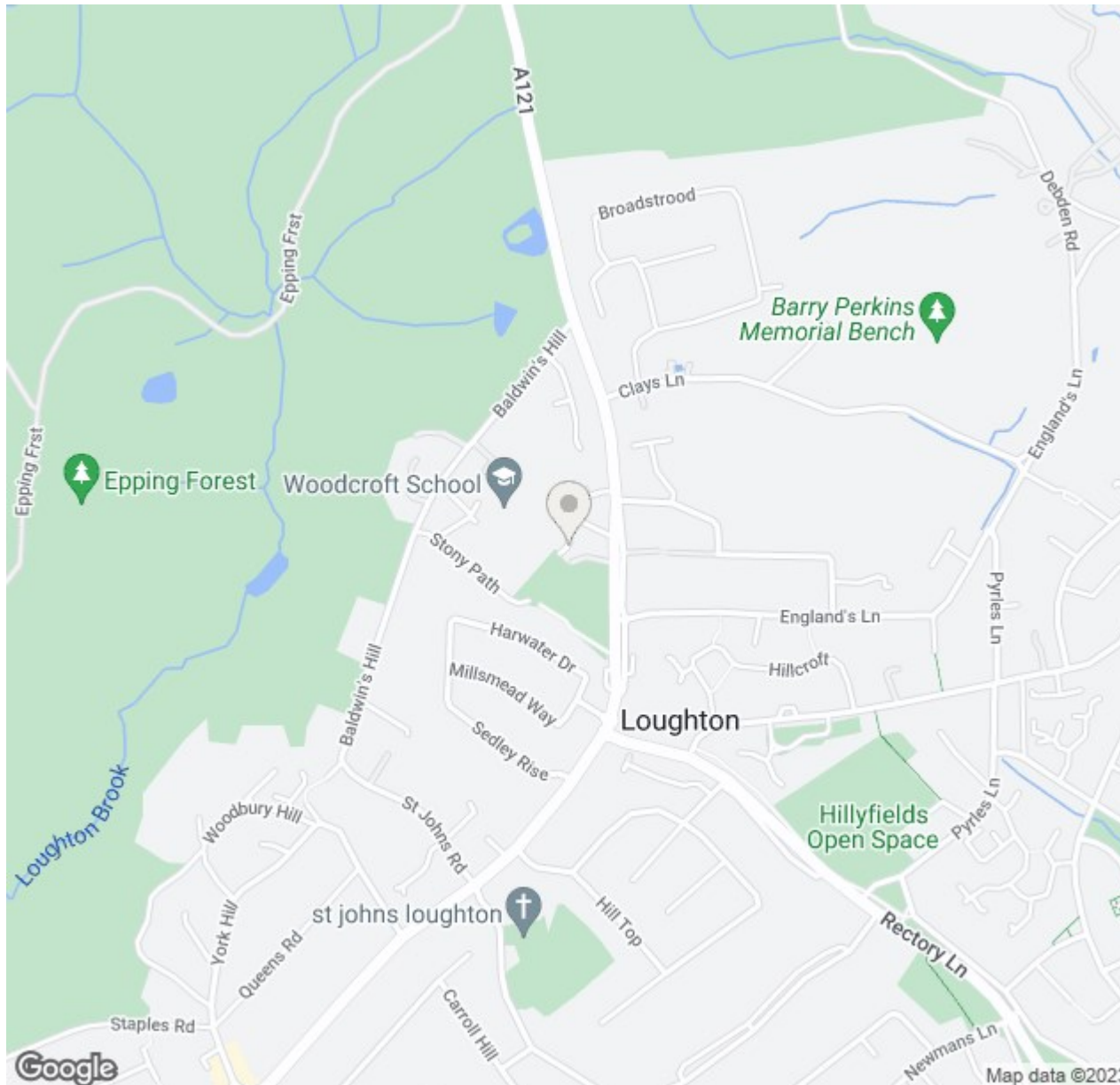






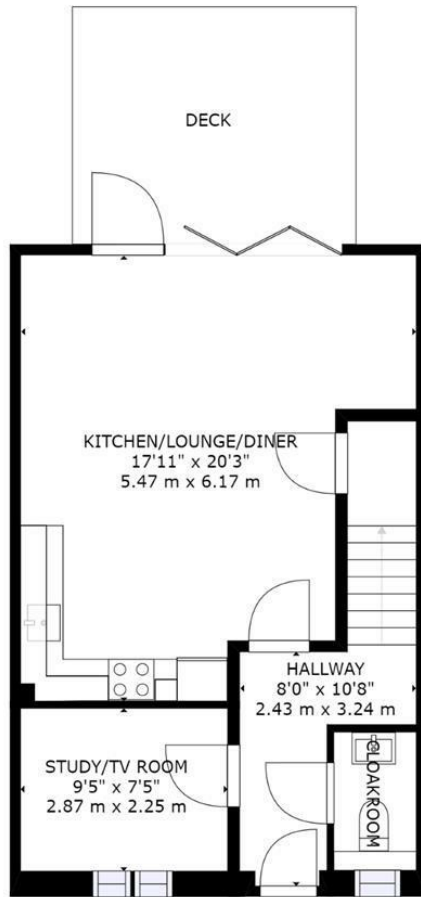


MAP & EPC

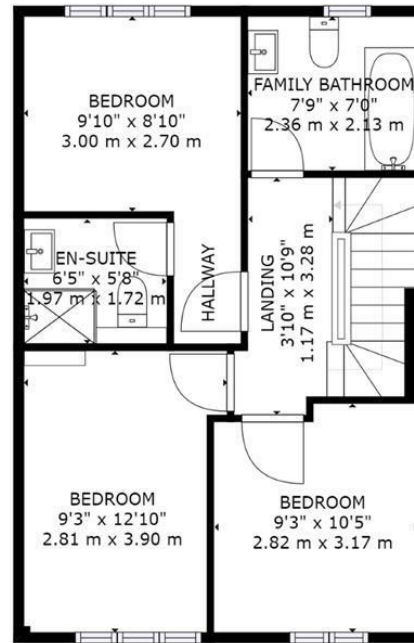




PLANS



FLOOR 1



FLOOR 2



FLOOR 3

GROSS INTERNAL AREA
 FLOOR 1: 505 sq. ft, 47 m², FLOOR 2: 500 sq. ft, 46 m²
 FLOOR 3: 336 sq. ft, 31 m²
 TOTAL: 1342 sq. ft, 125 m²
 SIZES AND DIMENSIONS ARE APPROXIMATE, ACTUAL MAY VARY.

elliott  james

165 | High Road | Loughton | IG10 4LF

Contact Us : 0208 0165 333 | contact@ejpr.co.uk

Follow us on social media | Search 'ejpr165'



These particulars have been prepared with approximate measurements in good faith by Elliott James - Prime Residential with the assistance of the vendor. The intention is to provide a fair and accurate guide to the property. These details do not constitute or form any part of an offer or contract. All interested parties must verify for themselves the accuracy of the information provided. The structural condition of the property or the condition of the heating, plumbing or electrical installations or any appliances have not been checked or tested and suitable investigations by interested parties should be conducted prior to purchase.