

TAMARA COURT

STRADBROKE DRIVE
CHIGWELL



IMPERIAL DEVELOPMENTS

TAMARA COURT

CHIGWELL

A new and exclusive residence comprising of a collection of five luxurious apartments. Tamara Court is where timeless design meets the height of contemporary living on one of Chigwell's most desirable roads – Stradbroke Drive.

T



Computer generated image is indicative only.



Computer generated image is indicative only.

TAMARA COURT

EXTRAORDINARY IN EVERY WAY

In a place renowned for its high expectations and sense of style, the arrival of Tamara Court sets a striking new standard.

Every detail of this remarkable new property has been carefully chosen to create the ultimate setting for luxurious living and entertaining. Each of the apartments at Tamara Court offers beautifully designed interiors, impressively grand proportions and opulent finishing touches.

The apartments each benefit from their own private terrace or gardens (ground floor only), with access to communal landscaped gardens, a residents' gym, secure underground parking and private storage spaces.

T



Computer generated image is indicative only.



Computer generated image is indicative only.



Computer generated image is indicative only.



TAMARA COURT

FIRST CLASS FACILITIES

The lower-ground floor of the residence is home to a fully-equipped, private gym for the ultimate in at-home luxury and convenience.

A private underground car park offers the highest level of security, dedicated storage areas for each apartment and direct lift access to all floors.

SPECIFICATION

KITCHEN

- Contemporary Leicht kitchen
- Soft closing cabinetry and drawer units
- Stone worktop and upstand
- Stainless steel sink
- Quooker hot tap
- Waste disposal
- Siemens studioLine integrated appliances including oven, combination oven, hob, extractor hood, tall fridge and freezer
- Wine cooler
- LED lighting

UTILITY ROOM

- Washing machine and dryer
- Sink, worktop and storage cupboards

BATHROOMS & EN-SUITES

- Double stone basin to master bedroom/single basin to bedroom 2 with wall mounted storage
- Mirror fronted storage cabinet to master bedroom
- Mirror set into feature niche
- Freestanding feature bath with Gessi valves and handheld shower
- Walk-in wet room style shower with Gessi valves and handheld shower
- Frameless fixed glass shower screen
- Duravit wall hung toilet with soft close seat
- Grohe toilet frame
- Tiled feature niches with LED lighting
- Italian porcelain tiles
- Bathroom TV to master bedroom en-suites

WALLS CEILING & ARCHITRAVE

- Bespoke designed coffer ceiling detail to lounge kitchen and hallway with LED lighting
- Ceilings approx 2.8-3m high (painted matte white)
- Ceiling curtain upstands to all rooms
- Bespoke designed architrave and skirting

FLOORING

- Porcelain floor tiles to kitchen living room, hallway, bathrooms and cloakroom
- Carpet to bedrooms and walk-in wardrobes
- Underfloor heating throughout

INTERNAL DOORS

- Bespoke 2.4m solid wood doors
- Stainless steel ironmongery

WINDOWS & EXTERNAL DOORS

- Large frameless sliding doors to living areas
- Large double glazed casement sliding sash windows

ELECTRICAL /AUDIO VISUAL

- Ducted air conditioning
- Matte black Control4 lighting panels
- Black glass in wall touch screens
- Full Control4 automation to control lights/audio/TV/intercom/blinds and other
- In-ceiling speakers throughout apartment
- Central satellite system to AV rack cupboard
- Telephone connections – BT master located in AV cupboard

SECURITY

- Remote controlled electronically operated gates vehicle entrance
- Video entry to gated entrance
- Smoke heat and carbon monoxide alarms

PRIVATE GARDENS & TERRACES

- Private garden to ground floor apartments
- Private terraces to apartments 3, 4 and the penthouse
- Feature lighting to terraces
- External water tap

COMMUNAL AREAS

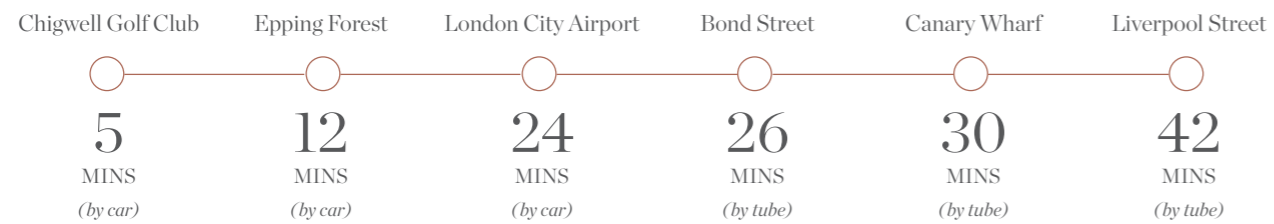
- Two allocated underground parking spaces
- One secure basement storage unit per apartment with double socket and lighting
- Visitor parking
- Residents gym with state-of-the-art equipment
- Stunning interior designed communal entrance hallway to showcase 6m high ceilings and mezzanine landing. Feature wall with chandelier and custom floor details.
- Lift to all floors including basement
- Communal external bin store
- Landscaped grounds with water feature

A FIVE - STAR LOCATION

Tamara Court is in a prime location in the heart of Chigwell.
It is positioned moments from sprawling parks and the picturesque countryside.

The highly regarded Chigwell Golf Club and Epping Forest are both local to this luxurious development. A variety of popular restaurants, cafés, hairdressing and nail salons and boutiques are also within easy reach

This unique residence is well connected for fast and easy access to the City and Central London being conveniently situated on the Central Line. Whether it be for business or pleasure, the vibrant Capital can be reached within thirty minutes.



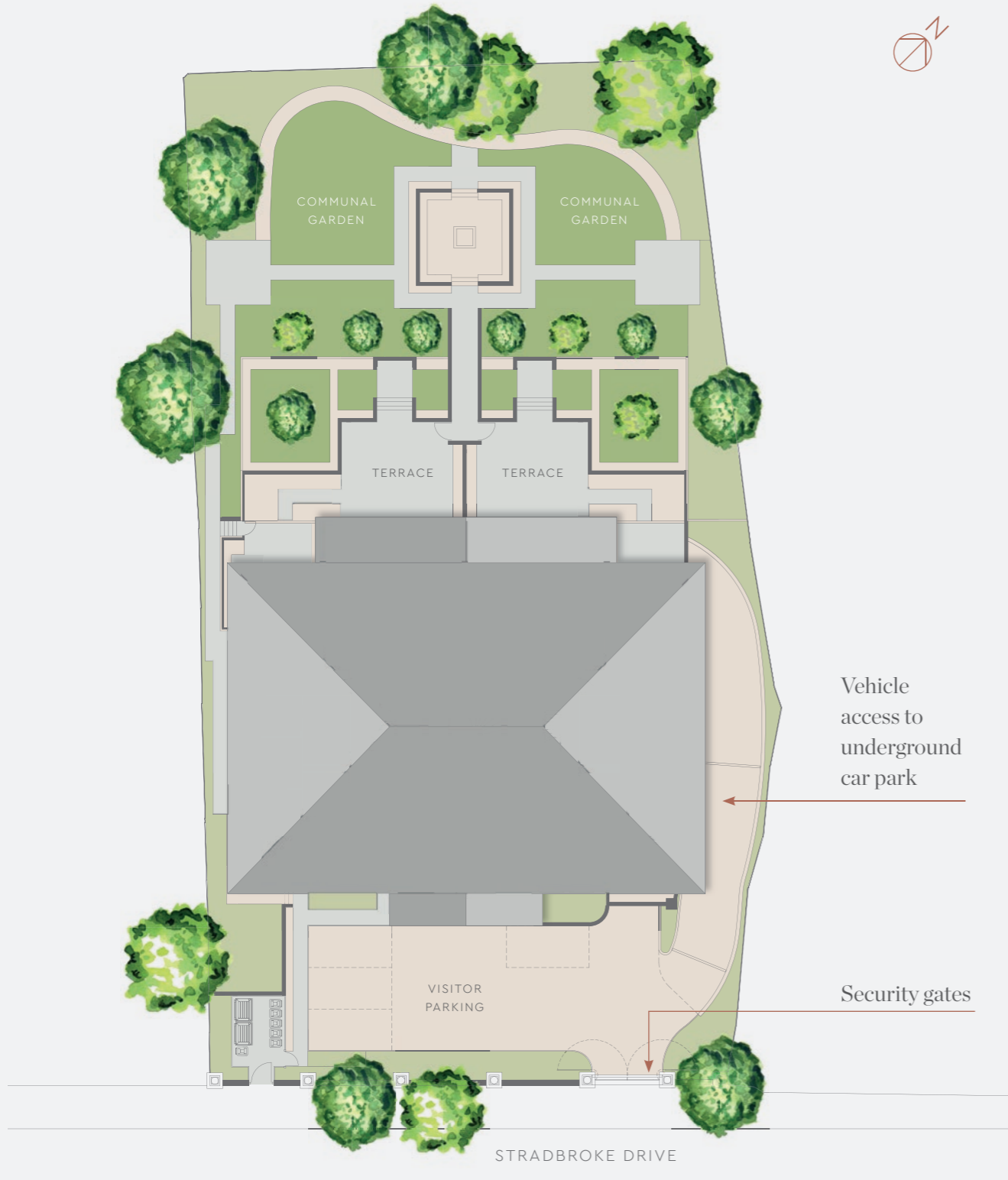
Travel times taken from TfL and Google Maps. Tube journey from Chigwell underground station.

T



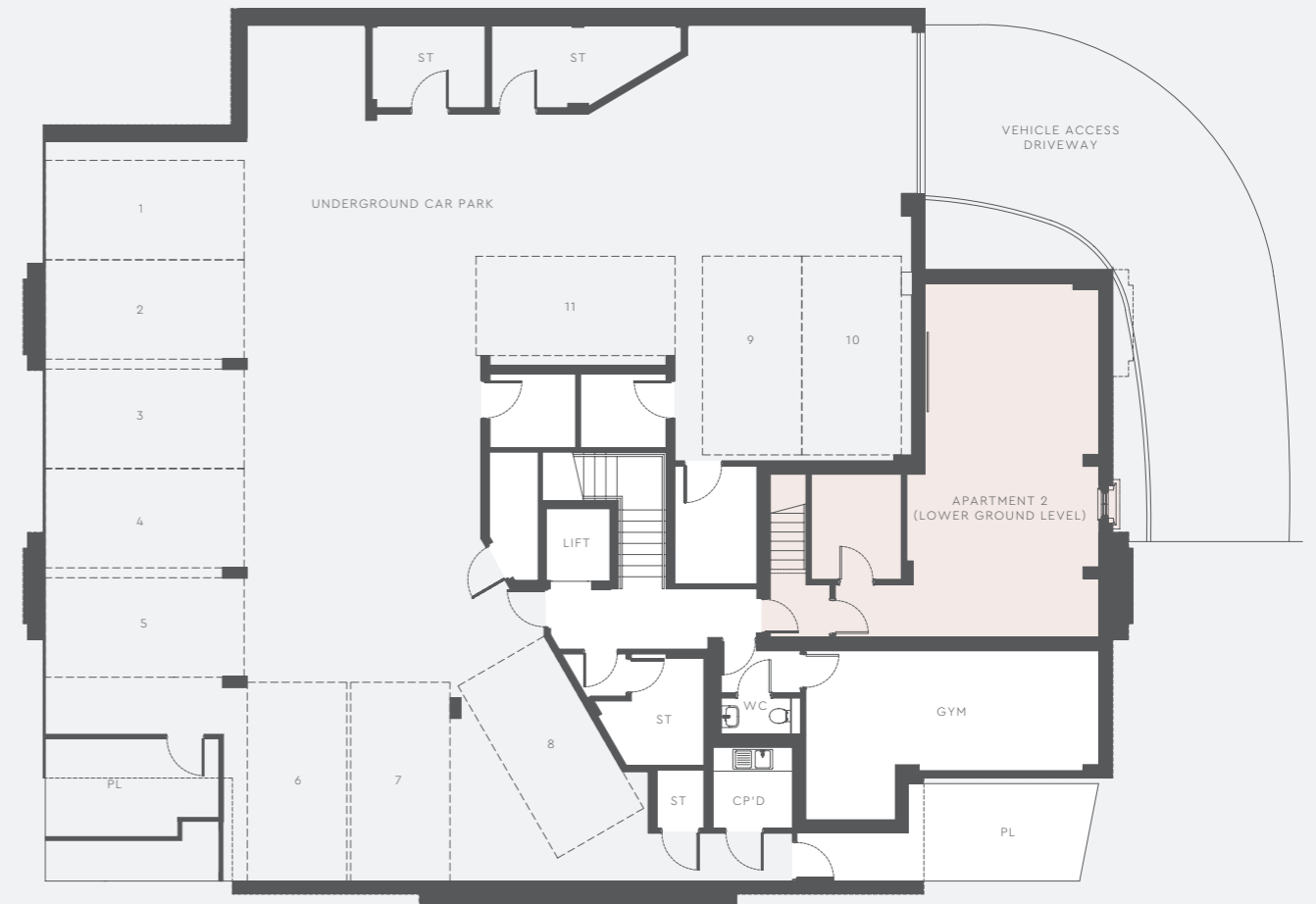
SITE PLAN

TAMARA COURT



LOWER GROUND FLOOR

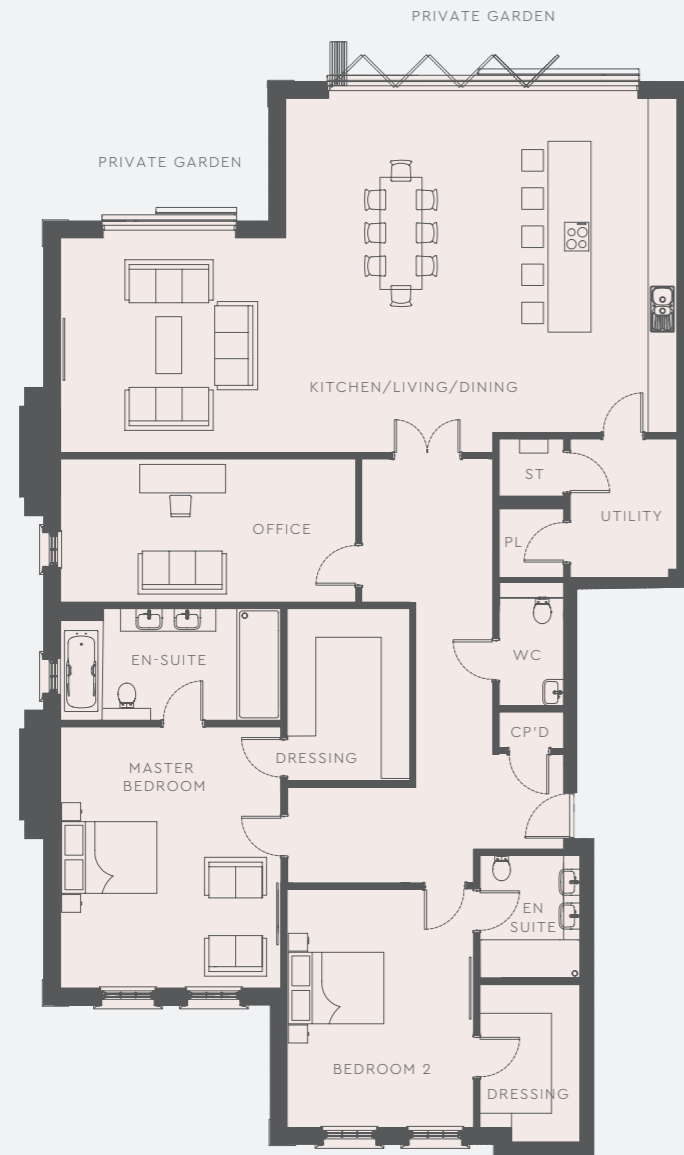
BASEMENT PARKING, GYMNASIUM & STORAGE



ST - Storage, PL - Plant Room, Cp'd - Cupboard.

GROUND FLOOR

APARTMENT 01



01

TWO BEDROOM APARTMENT	M	FT
KITCHEN / LIVING / DINING*	12.49 x 7.31	40'11" x 23'11"
OFFICE	6.25 x 3.00	20'6" x 9'10"
MASTER BEDROOM	5.51 x 4.63	18'0" x 15'2"
BEDROOM 2	5.28 x 3.89	17'3" x 12'9"
TOTAL	232 SQM	2,500 SQFT



ST – Storage, PL – Plant Room, Cp'd – Cupboard. *Maximum measurement taken.

GROUND FLOOR

APARTMENT 02



02

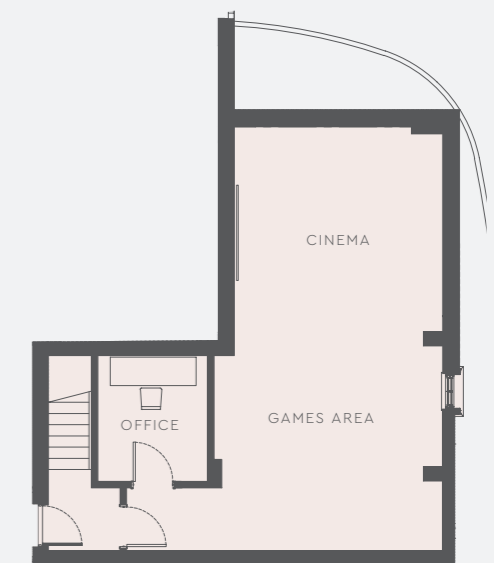
TWO BEDROOM APARTMENT	M	FT
KITCHEN / LIVING / DINING*	12.49 x 7.31	40'11" x 23'11"
OFFICE	2.50 x 2.20	8'2" x 7'3"
MASTER BEDROOM	5.51 x 4.63	18'0" x 15'2"
BEDROOM 2	5.28 x 3.89	17'3" x 12'9"
GAMES / CINEMA ROOM*	7.43 x 5.72	24'4" x 18'9"
TOTAL	279 SQM	3,000 SQFT



ST – Storage, PL – Plant Room, Cp'd – Cupboard. *Maximum measurement taken.

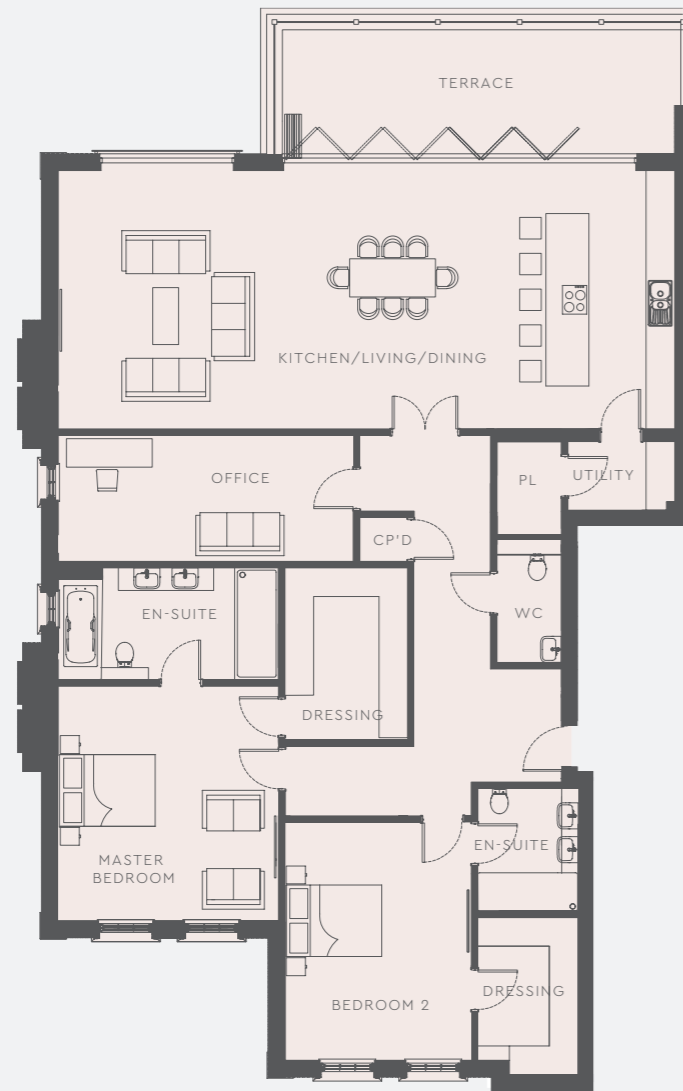
LOWER GROUND

APARTMENT 02



FIRST FLOOR

APARTMENT 03



03

TWO BEDROOM APARTMENT

	M	FT
KITCHEN / LIVING / DINING*	13.00 x 5.32	42'7" x 17'5"
OFFICE	5.12 x 2.42	16'9" x 7'11"
MASTER BEDROOM	5.41 x 4.66	17'9" x 15'3"
BEDROOM 2	5.28 x 3.86	17'3" x 12'8"
TOTAL	204 SQM	2,200 SQFT



ST - Storage, PL - Plant Room, Cp'd - Cupboard. *Maximum measurement taken.

FIRST FLOOR

APARTMENT 04



04

TWO BEDROOM APARTMENT

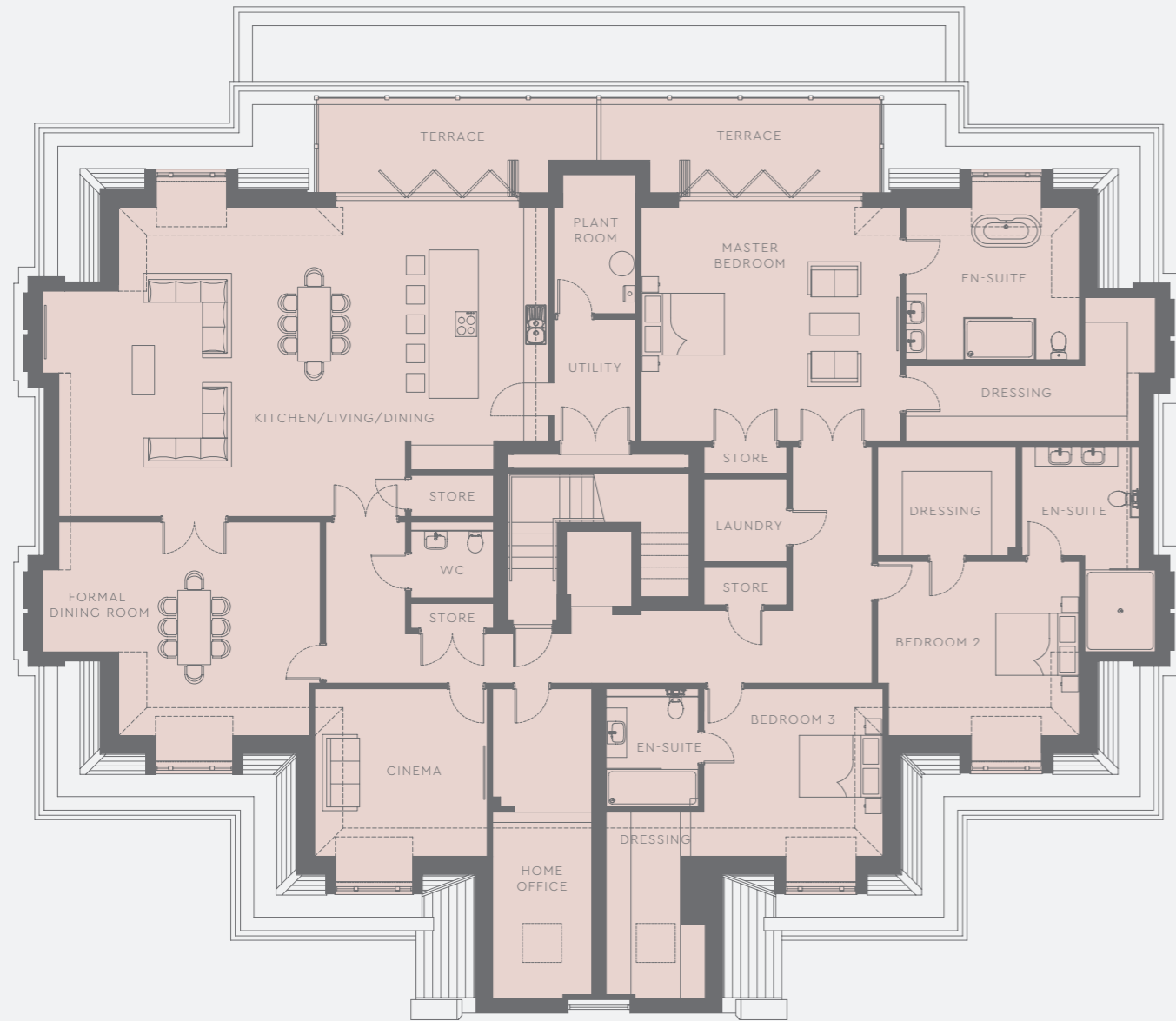
	M	FT
KITCHEN / LIVING / DINING*	13.00 x 5.32	42'7" x 17'5"
OFFICE	5.08 x 2.43	16'8" x 7'11"
MASTER BEDROOM	5.41 x 4.66	17'9" x 15'3"
BEDROOM 2	5.28 x 3.86	17'3" x 12'8"
TOTAL	204 SQM	2,200 SQFT



ST - Storage, PL - Plant Room, Cp'd - Cupboard. *Maximum measurement taken.

SECOND FLOOR

PENTHOUSE



Penthouse

THREE BEDROOM APARTMENT	M	FT
KITCHEN / LIVING / DINING	10.57 X 6.88	34'8" X 22'7"
MASTER BEDROOM	7.85 X 5.23	25'9" X 17'2"
BEDROOM 2	7.12 X 6.12	23'4" X 20'11"
BEDROOM 3	4.17 X 3.47	13'8" X 11'5"
BAR / CINEMA ROOM	7.38 X 4.73	24'3" X 15'6"
STUDY	4.40 X 3.96	14'5" X 13'0"
BALCONY	14.00 X 1.70	45'11" X 5'7"
TOTAL	356 SQM	3,830 SQFT



TAMARA COURT

CHIGWELL

Tamara Court is one of the finest buildings in the salubrious area of Chigwell. With captivating interiors and design-led spaces this development encapsulates the perfect balance of comfort, character and sophistication.

T

SCHEDULE

No.	Apartment Details	Floor	Size	Parking	Storage Room
01	2 bedroom, 2 bathroom	Ground floor	2,500 sqft	2 spaces	6 sqm / 65 sqft
02	2 bedroom, 2 bathroom	Ground/Lower floor	3,000 sqft	2 spaces	6.1 sqm / 66 sqft
03	2 bedroom, 2 bathroom	First floor	2,200 sqft	2 spaces	4 sqm / 43 sqft
04	2 bedroom, 2 bathroom	First floor	2,200 sqft	2 spaces	4 sqm / 43 sqft
Penthouse	3 bedroom, 3 bathroom	Second floor	3,830 sqft	2 spaces	14.3 sqm / 155 sqft

TAMARA COURT

46 STRADBROKE DRIVE
CHIGWELL, ESSEX
IG7 5QZ
WWW.TAMARACOURT.CO.UK

SELLING AGENTS

elliott  james

PRIME RESIDENTIAL

SALES ENQUIRIES
020 8016 5333
contact@ejpr.co.uk
WWW.EJPR.CO.UK



IMPERIAL DEVELOPMENTS
WWW.IMPERIALDEVELOPMENTS.COM

Disclaimer: Whilst every care has been taken to ensure accuracy these particulars do not constitute part of any offer or contract and the right to change plans, specifications and materials is reserved. All measurements are given as a guide only. Purchasers are advised to check plot specific dimensions and specifications prior to reservation. No liability can be accepted for any errors arising there from. Development images are indicative and may vary. Specifications for this development may not include fixtures, fittings and furnishings shown in the photographs and illustrations. Features and finishes are shown for illustrative purposes only and are not intended to form part of any contract or warranty. No responsibility is taken for any other error, omission, or mis-statements in these particulars. Neither the vendor nor its agents make or give, whether in these particulars, during the negotiations or otherwise, any representation or warranty in relation to this property. Design by Fresh Lemon.



IMPERIAL DEVELOPMENTS