



P R I M E R E S I D E N T I A L

P R E S E N T S

Whitehills Road, Loughton



elliott E | J james

PRIME RESIDENTIAL

# Whitehills Road, Loughton



Nestled on the charming Whitehills Road in Loughton, this delightful end terrace house offers a perfect blend of comfort and convenience. With 1,086 square feet, the property boasts two spacious reception rooms, a large kitchen with breakfast bar seating, utility room and downstairs WC, three bedrooms and family bathroom.

The rear garden has recently been landscaped to provide a large patio area for dining and a separate outdoor lounge area. The remainder of the garden is laid to lawn with mature shrubs to borders. There is also a shed set on a concrete base to the rear of the property.

The property is further enhanced by the availability of parking for two vehicles, a valuable asset in this sought-after area.

With its appealing layout and prime location, this end terrace house presents a wonderful opportunity for those seeking a comfortable and stylish home in a desirable neighbourhood.



With over 15 years of personal local experience in both independent and corporate agencies it has been my passion to bring seamless integration of the latest property technology to our new agency. Our unique Partnership sets us apart as market leaders.



An unrestricted fully immersive walkthrough is available in our E|J Business Lounge by arrangement. Restricted walkthrough access is available on our website through your smartphone or desktop.

**Elliott Lawlor** **MNAEA & MARLA**

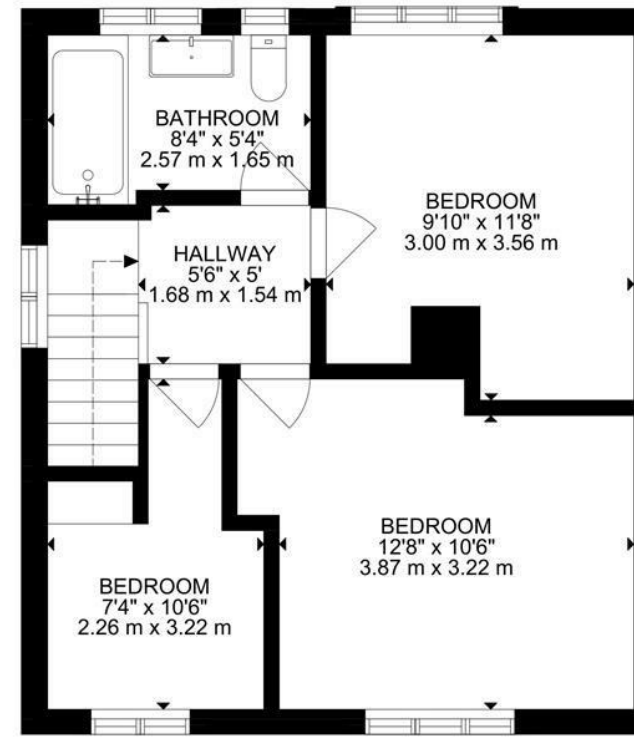
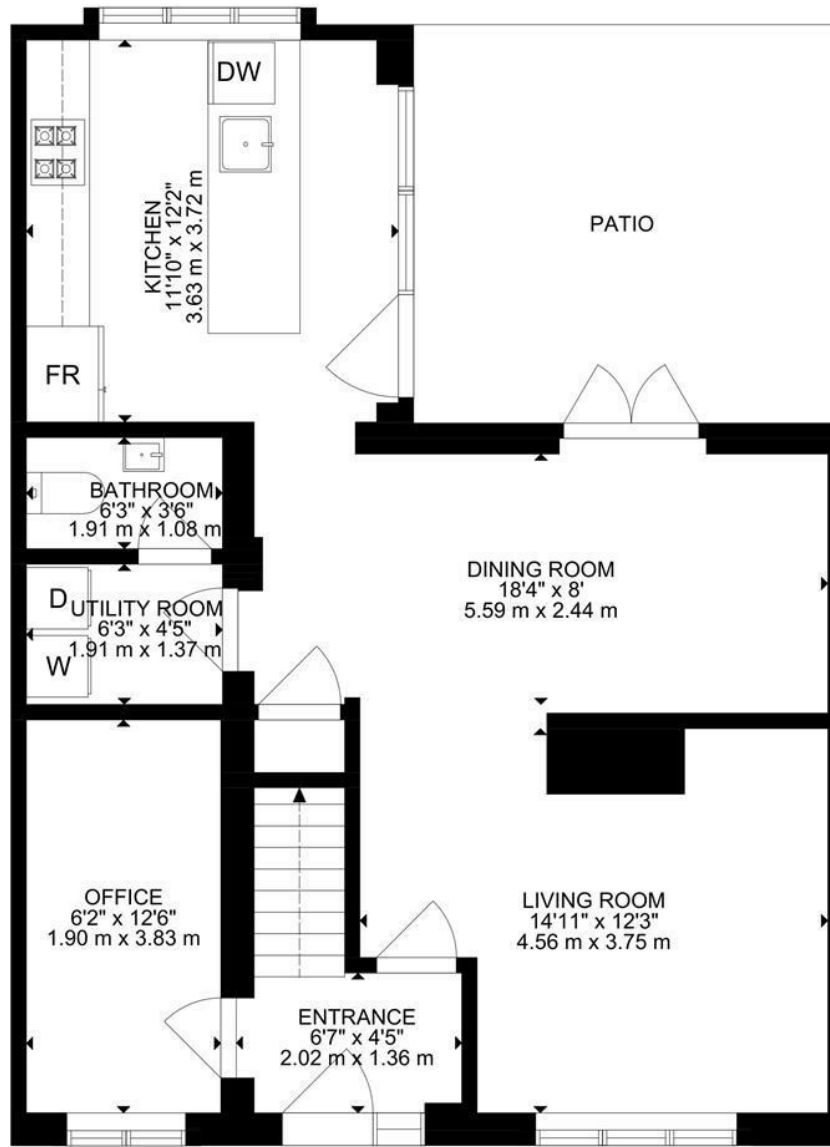
[contact@ejpr.co.uk](mailto:contact@ejpr.co.uk)

0208 0165 333

N  
E  
E  
D  
  
T  
O  
  
K  
N  
O  
W

Sqft 1086.00 sq ft	Type House - End Terrace	Style 1950s
Bedrooms 3	Receptions 2	Bathrooms 1
Tenure Freehold	Local Authority EFDC	Tax Band C

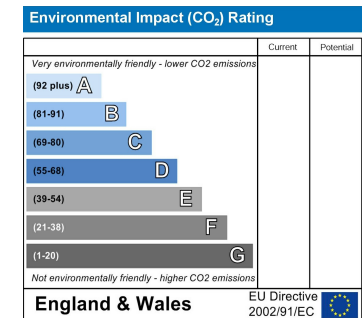
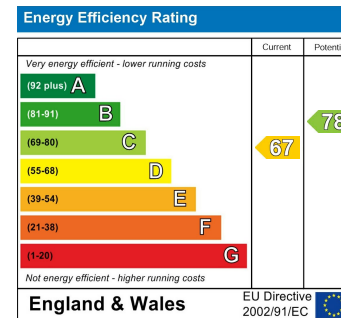
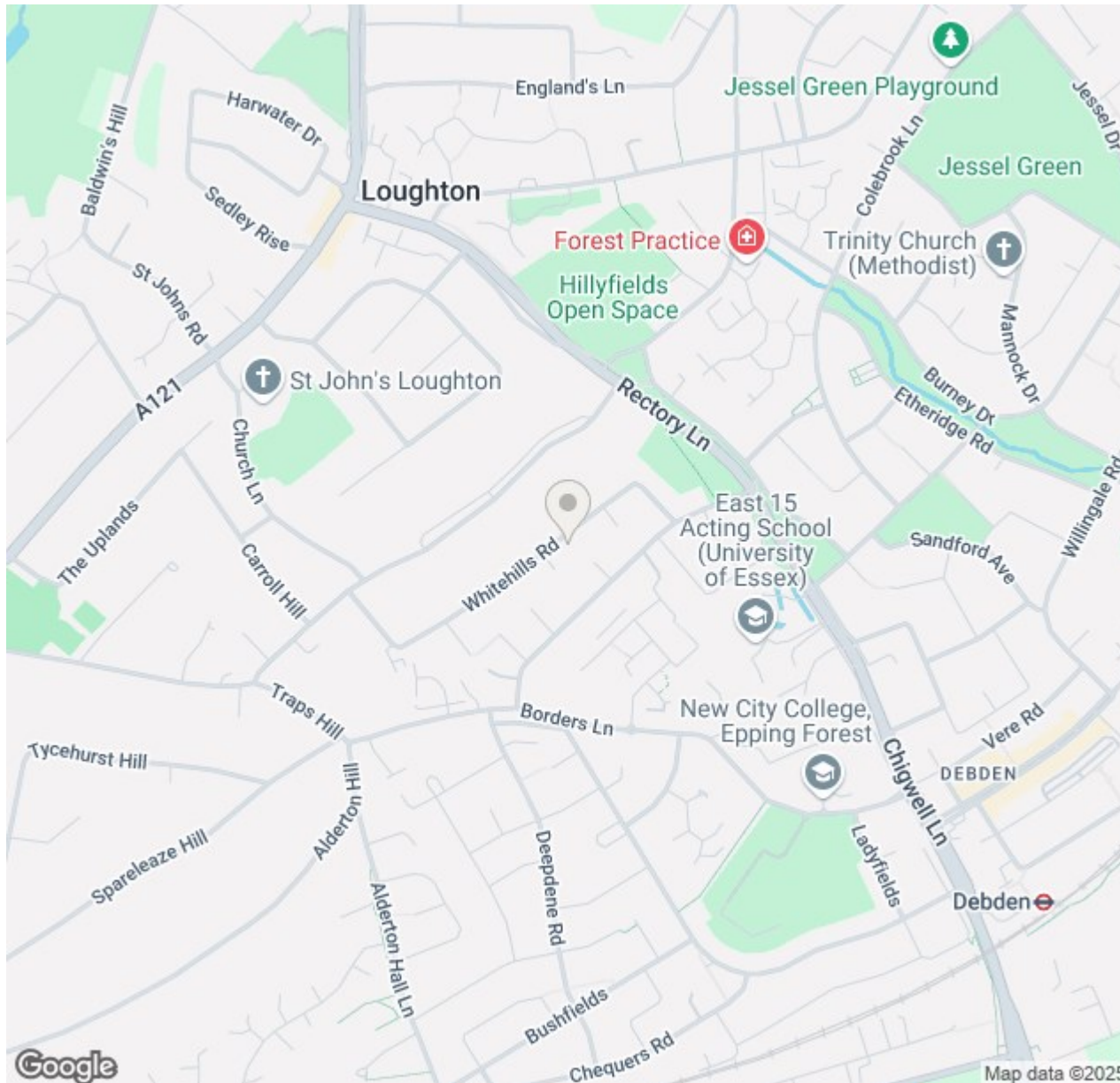
# PLANS



GROSS INTERNAL AREA  
 GROUND FLOOR: 688 SQ FT, 64 m<sup>2</sup>, FLOOR : 398 SQ FT, 37 m<sup>2</sup>  
 TOTAL: 1086 SQ FT, 101 m<sup>2</sup>  
 SIZE AND DIMENSIONS ARE APPROXIMATE, ACTUAL MAY VARY



# MAP & EPC



elliott  james

165 | High Road | Loughton | IG10 4LF

Contact Us : 0208 0165 333 | [contact@ejpr.co.uk](mailto:contact@ejpr.co.uk)

Follow us on social media | Search 'ejpr165'



These particulars have been prepared with approximate measurements in good faith by Elliott James – Prime Residential with the assistance of the vendor. The intention is to provide a fair and accurate guide to the property. These details do not constitute or form any part of an offer or contract. All interested parties must verify for themselves the accuracy of the information provided. The structural condition of the property or the condition of the heating, plumbing or electrical installations or any appliances have not been checked or tested and suitable investigations by interested parties should be conducted prior to purchase.