



P R I M E R E S I D E N T I A L

P R E S E N T S

Freya Lodge, Loughton



elliott **E | J** james

PRIME RESIDENTIAL

Freya Lodge, Loughton



Plot 3 - Situated on Algiers Road in Loughton, this brand new, spacious one-bedroom apartment offers a perfect blend of modern living and convenience. Spanning an impressive 592 square feet, this property is designed to provide a bright and airy atmosphere, making it an ideal retreat for those seeking comfort and convenience.

At the heart of the apartment is the open-plan kitchen, dining, and living area, designed for both practicality and elegance. The engineered wood flooring adds warmth and sophistication, while the bespoke kitchen features quartz matt finish stone work surfaces for a refined touch. Fully integrated Bosch and Indesit appliances, including an oven, hob, fridge/freezer, and dishwasher, ensure effortless modern living.

This home also benefits from radiators, double-glazed windows for superior insulation, and ample built-in storage, making it both energy-efficient and highly functional. The generously sized bedroom serves as a peaceful retreat, with plenty of room for relaxation. A sleek, modern bathroom with high-quality fittings enhances the sense of luxury, ensuring a comfortable living experience.

Situated close to Epping Forest, Loughton station, commuting to London and beyond is effortless, making it an excellent choice for professionals. Additionally, a variety of local amenities are just a stone's throw away, offering everything from shops to cafes, ensuring that you have all you need within easy reach.

This exceptional apartment is perfect for individuals or couples looking for a stylish and convenient living space in a desirable area. Do not miss the opportunity to make this stunning property your new home.



The property market has always interested me and seeing the reaction when someone finds their next home is something that really drives me to go above and beyond. I have a pride in my local area having grown up here, this also allowed me to grow a strong knowledge of the local community. With experience in the role already I look to provide a service to both buyers and sellers in which communication and transparency are key. I am incredibly proud to be a part of such a brilliant team dedicated to providing bespoke service to such a beautiful community.



An unrestricted fully immersive walkthrough is available in our E|J Business Lounge by arrangement. Restricted walkthrough access is available on our website through your smartphone or desktop.

Daniel Thomas
contact@ejpr.co.uk
0208 0165 333

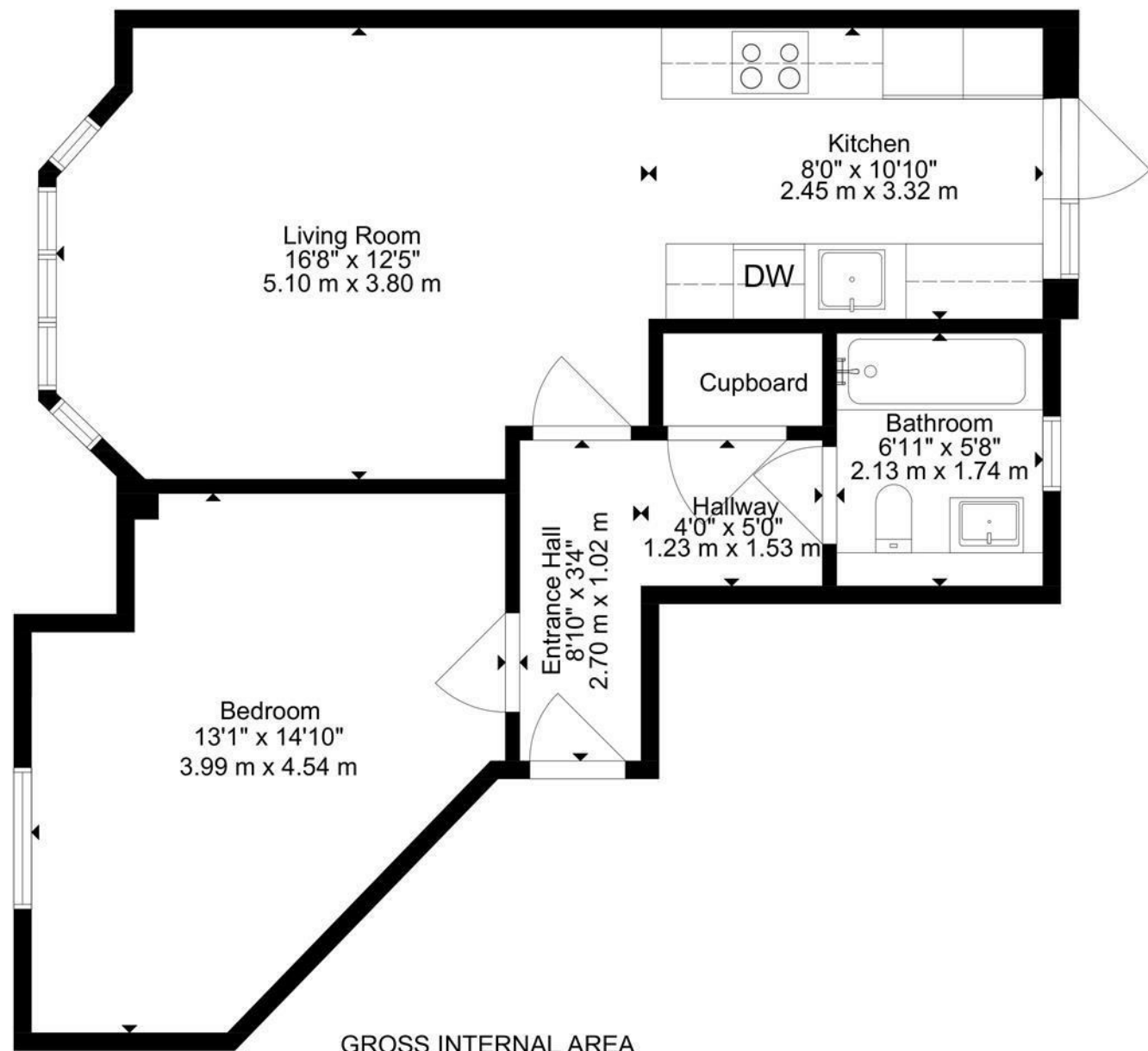
N
E
E
D

T
O

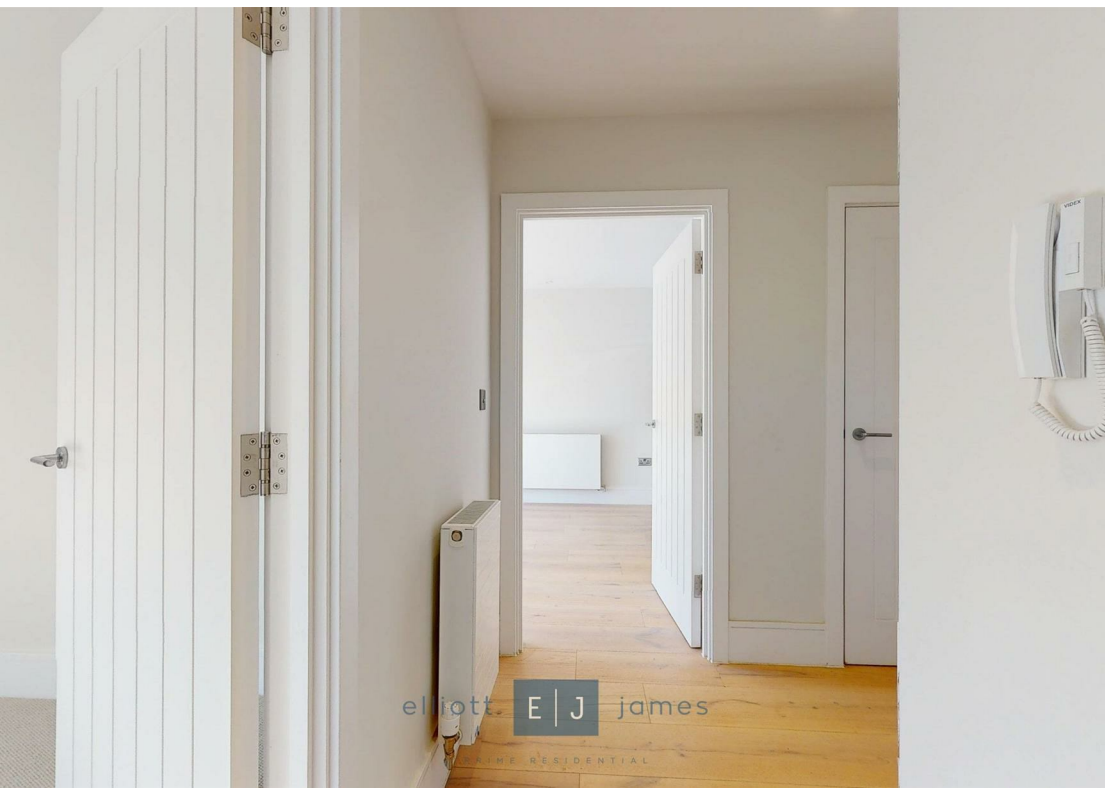
K
N
O
W

| | | |
|----------------------|----------------------------------|-------------------|
| Sqft 592.00 sq ft | Type Apartment | Style New Home |
| Bedrooms 1 | Receptions 1 | Bathrooms 1 |
| Tenure Leasehold | Local Authority Epping Forest | Tax Band |

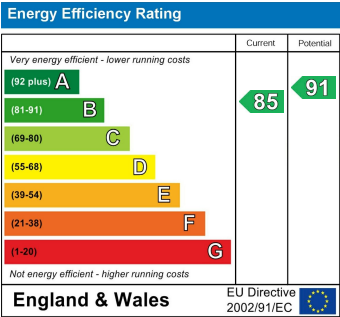
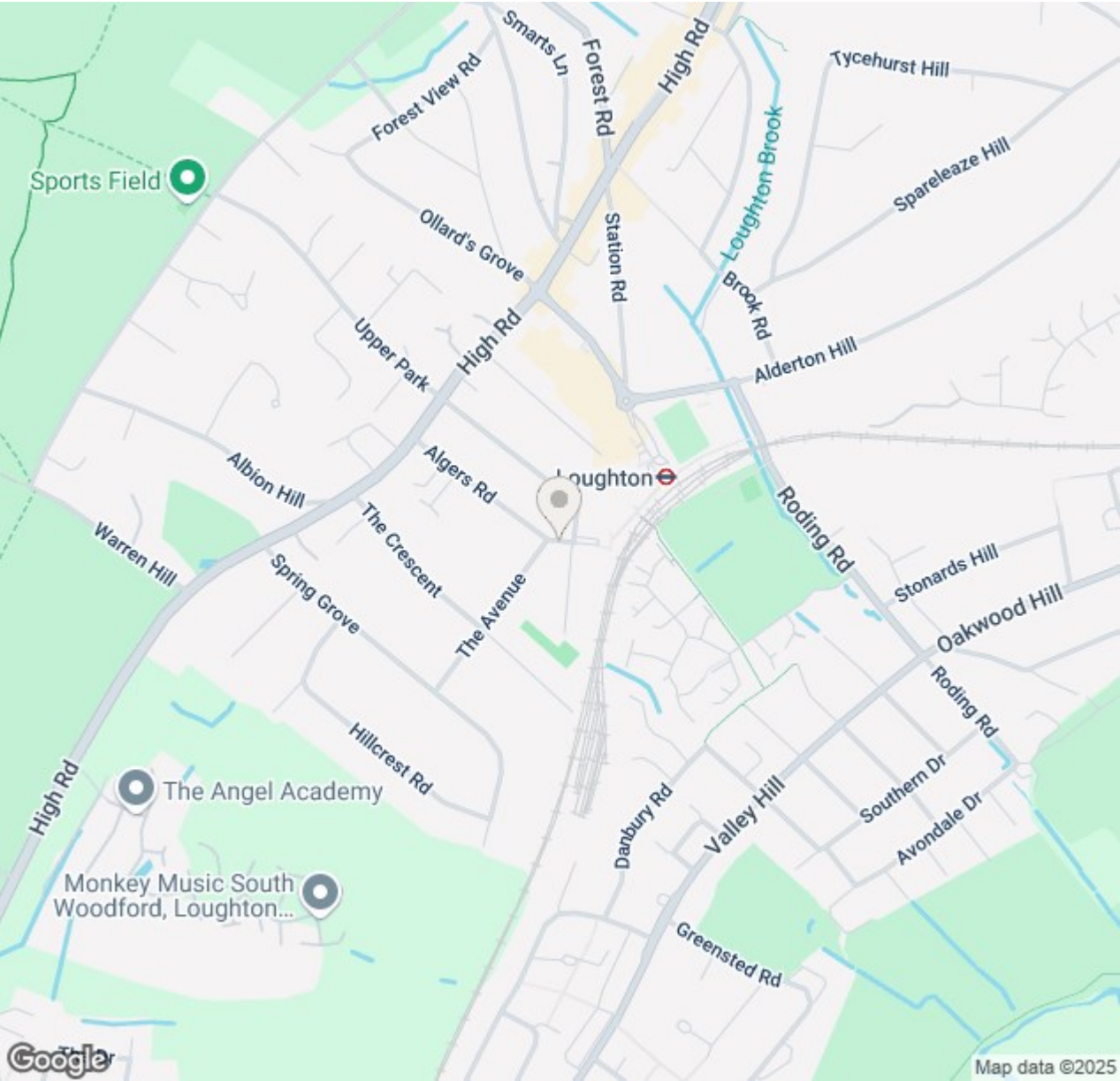
PLANS



GROSS INTERNAL AREA
TOTAL: 592 SQ FT, 55 m²
SIZE AND DIMENSIONS ARE APPROXIMATE, ACTUAL MAY VARY



MAP & EPC



elliott  james

165 | High Road | Loughton | IG10 4LF

Contact Us : 0208 0165 333 | contact@ejpr.co.uk

Follow us on social media | Search 'ejpr165'



These particulars have been prepared with approximate measurements in good faith by Elliott James – Prime Residential with the assistance of the vendor. The intention is to provide a fair and accurate guide to the property. These details do not constitute or form any part of an offer or contract. All interested parties must verify for themselves the accuracy of the information provided. The structural condition of the property or the condition of the heating, plumbing or electrical installations or any appliances have not been checked or tested and suitable investigations by interested parties should be conducted prior to purchase.