



P R I M E R E S I D E N T I A L

P R E S E N T S

Abbess Terrace, Loughton



elli | E | J | come

PRIME RES

Abness Terrace, Loughton

“ Tucked away in a quiet residential setting, just a short distance from local amenities and transport links, is this well-presented three bedroom family home offering a practical and versatile layout across two floors.

The ground floor features a welcoming entrance hall with useful storage and a guest cloakroom. To the front, there is a bright and spacious kitchen/diner, providing ample worktop and cupboard space alongside room for dining, making it an ideal hub for everyday living. To the rear, the generous living room spans over 15ft and provides an excellent space for relaxing or entertaining, with direct access to the garden.

Upstairs, the property offers three well-proportioned bedrooms. The principal bedroom benefits from built-in wardrobe space and a modern en-suite shower room. A further double bedroom and a third bedroom, ideal as a nursery, guest room or home office, are served by a family bathroom. Additional storage is available from the landing.

Externally, the property enjoys a private rear garden, perfect for outdoor dining and family use, along with the added benefit of an allocated parking space. ”

The property market has always interested me and seeing the reaction when someone finds their next home is something that really drives me to go above and beyond. I have a pride in my local area having grown up here, this also allowed me to grow a strong knowledge of the local community. With experience in the role already I look to provide a service to both buyers and sellers in which communication and transparency are key. I am incredibly proud to be a part of such a brilliant team dedicated to providing bespoke service to such a beautiful community.



An unrestricted fully immersive walkthrough is available in our E|J Business Lounge by arrangement. Restricted walkthrough access is available on our website through your smartphone or desktop.

Daniel Thomas
contact@ejpr.co.uk
0208 0165 333

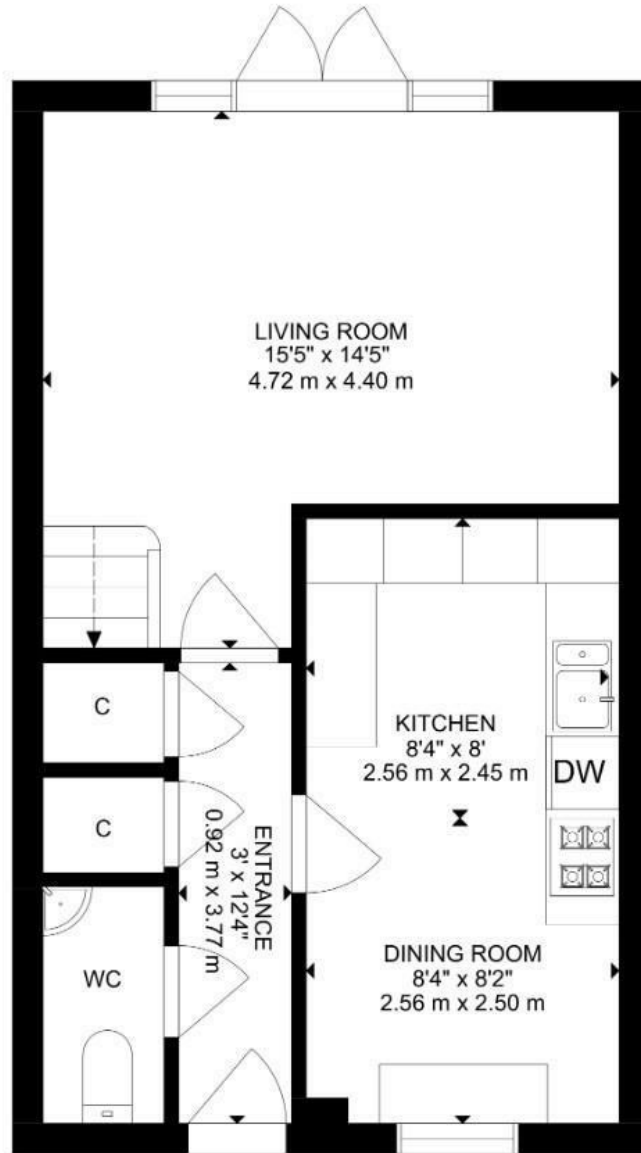
N
E
E
D

T
O

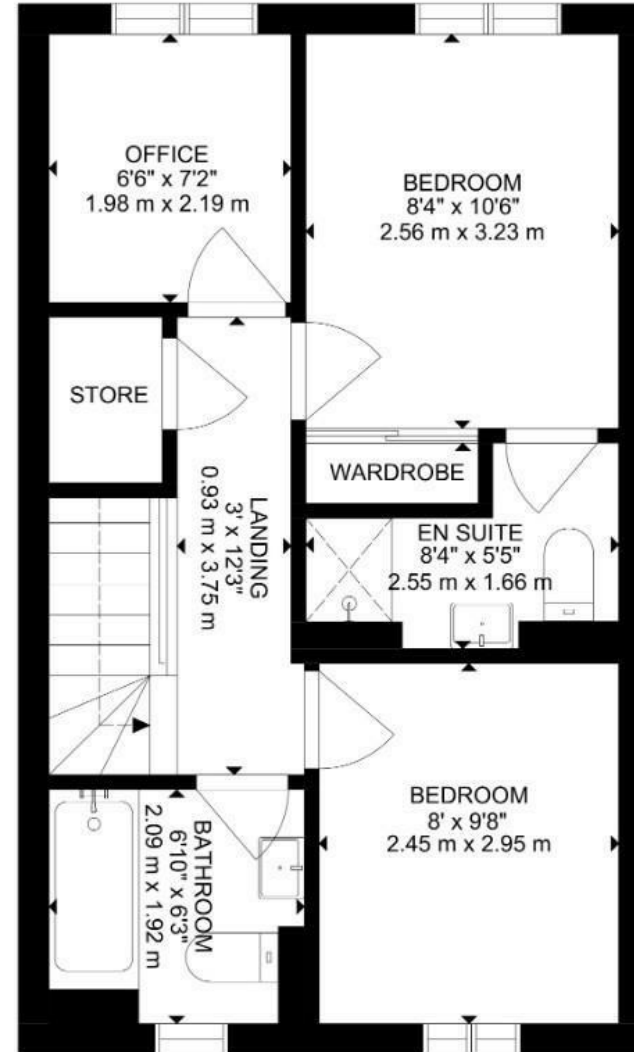
K
N
O
W

Sqft 838.00 sq ft	Type House - Mid Terrace	Style New Home
Bedrooms 3	Receptions 1	Bathrooms 2
Tenure Freehold	Local Authority Epping	Tax Band D

PLANS

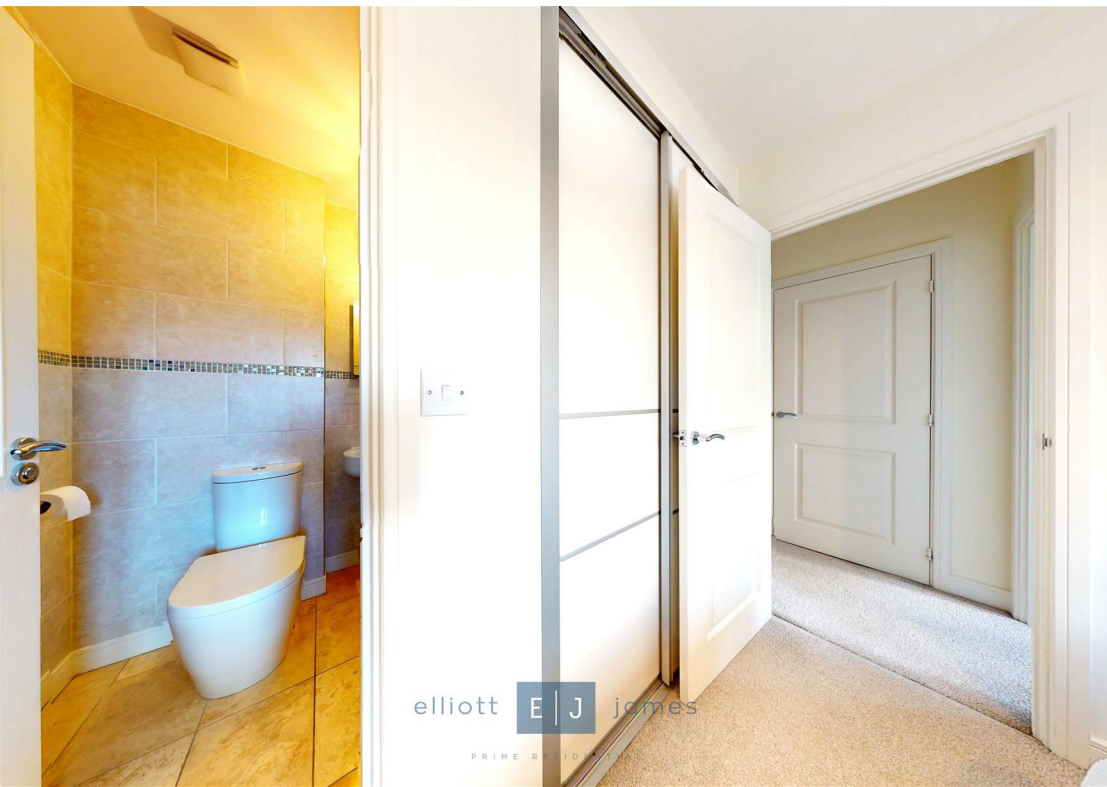


GROUND FLOOR

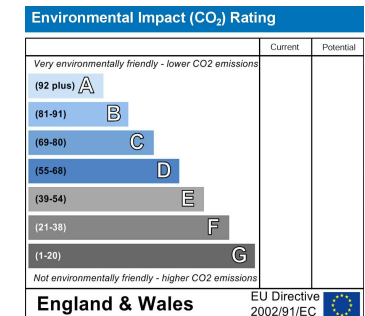
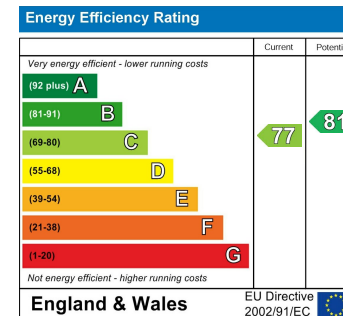
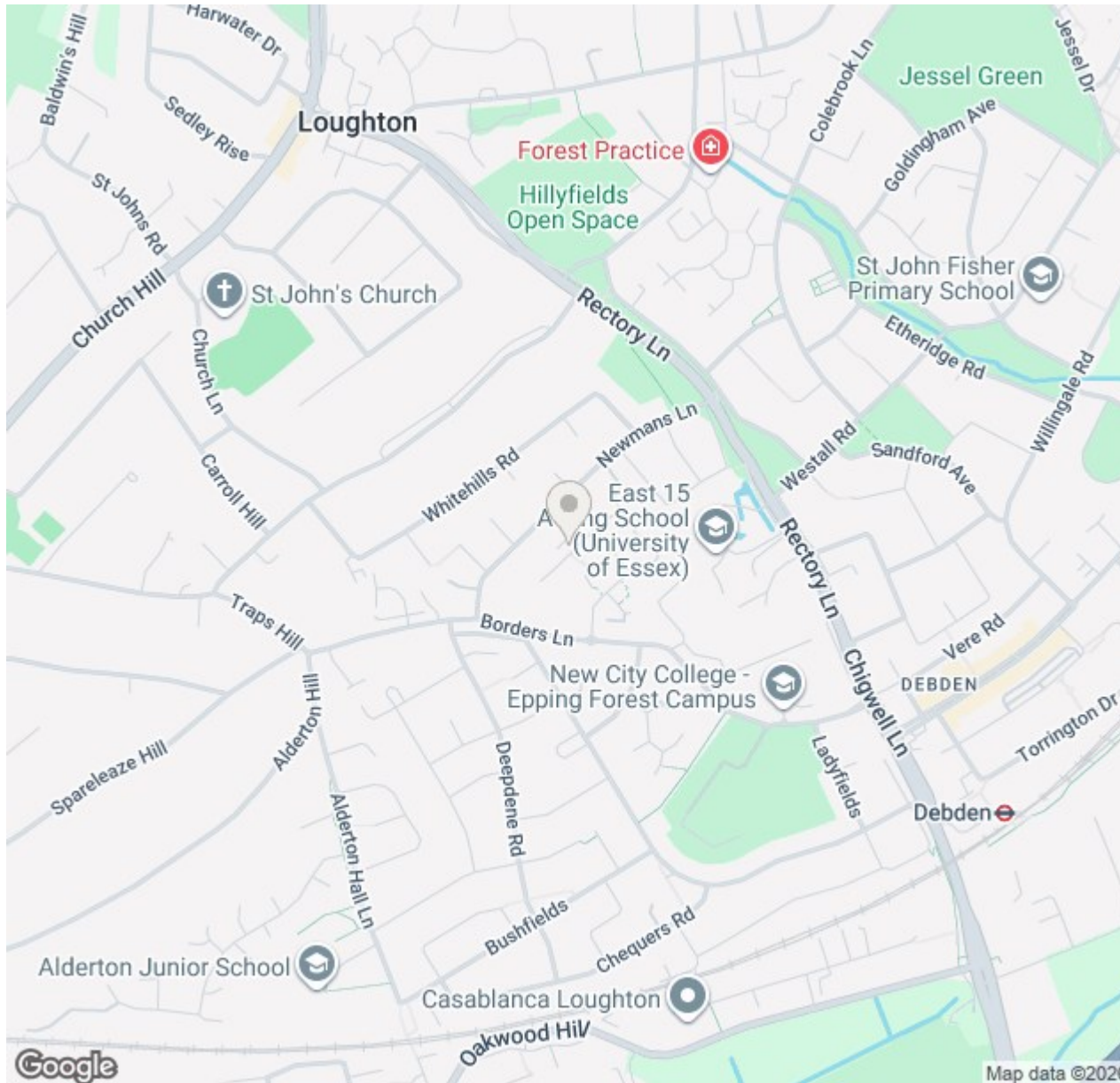


FIRST FLOOR

GROSS INTERNAL AREA
GROUND FLOOR: 39 m², 419 SQ FT, FIRST FLOOR: 39 m², 419 SQ FT
TOTAL: 78 m², 838 SQ FT
SIZE AND DIMENSIONS ARE APPROXIMATE, ACTUAL MAY VARY



MAP & EPC



elliott  james

165 | High Road | Loughton | IG10 4LF

Contact Us : 0208 0165 333 | contact@ejpr.co.uk

Follow us on social media | Search 'ejpr165'



These particulars have been prepared with approximate measurements in good faith by Elliott James – Prime Residential with the assistance of the vendor. The intention is to provide a fair and accurate guide to the property. These details do not constitute or form any part of an offer or contract. All interested parties must verify for themselves the accuracy of the information provided. The structural condition of the property or the condition of the heating, plumbing or electrical installations or any appliances have not been checked or tested and suitable investigations by interested parties should be conducted prior to purchase.