



P R I M E R E S I D E N T I A L

P R E S E N T S

Theydon Road, Epping



elliott E|J james

Theydon Road, Epping



A substantial and characterful five-bedroom detached residence, extending to approximately 2,937 square foot, set within a mature and private plot in the highly desirable area of Epping. Dating back to 1912, the property blends period charm with spacious and versatile accommodation ideal for modern family living.

The ground floor offers an excellent range of living space, including a formal living room, separate dining room, and an impressive family room providing a superb central hub for everyday living and entertaining. A bright and well-appointed kitchen features classic shaker-style cabinetry, granite worktops, and integrated appliances, complemented by a breakfast nook and adjoining utility room for added practicality. A separate study and a delightful sunroom further enhance the versatility of the ground floor, offering ideal spaces for home working or relaxation.

Upstairs, the property comprises five well-proportioned bedrooms, including a generous principal bedroom with en-suite bathroom and walk-in wardrobe. A family bathroom serves the remaining bedrooms, all arranged around a spacious landing.

Externally, the property is approached via a private driveway providing ample off-street parking and access to a garage. The rear garden is a standout feature, beautifully landscaped and secluded, with mature trees and planting, a large patio area, and a swimming pool, creating an exceptional setting for outdoor entertaining.

Situated in Theydon, the home enjoys a desirable balance of countryside surroundings and convenience, with easy access to local amenities, highly regarded schools, and transport links including the Central Line.



The property market has always interested me and seeing the reaction when someone finds their next home is something that really drives me to go above and beyond. I have a pride in my local area having grown up here, this also allowed me to grow a strong knowledge of the local community. With experience in the role already I look to provide a service to both buyers and sellers in which communication and transparency are key. I am incredibly proud to be a part of such a brilliant team dedicated to providing bespoke service to such a beautiful community.



An unrestricted fully immersive walkthrough is available in our E|J Business Lounge by arrangement. Restricted walkthrough access is available on our website through your smartphone or desktop.

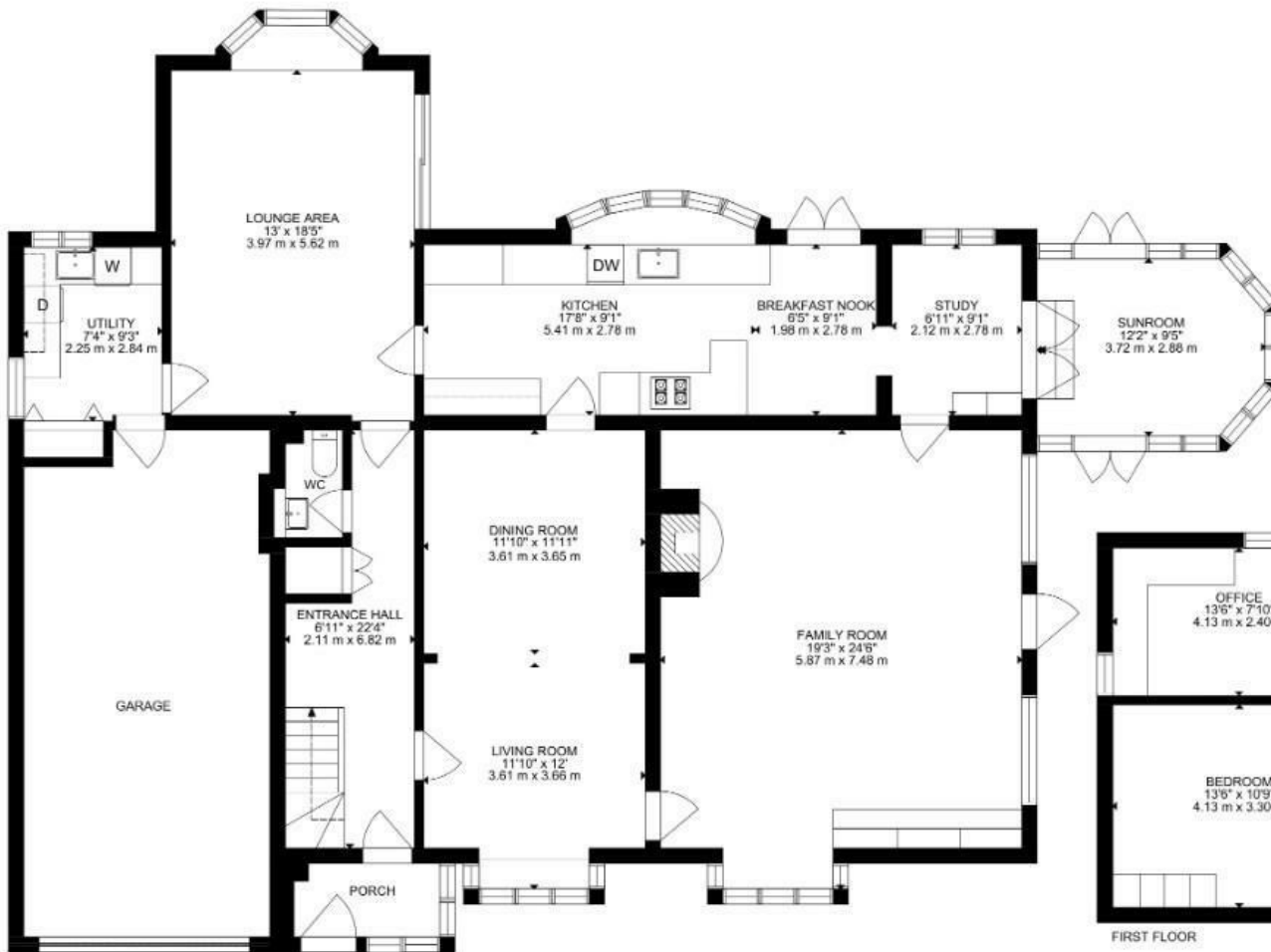
Daniel Thomas
contact@ejpr.co.uk
0208 0165 333

N
E
E
D

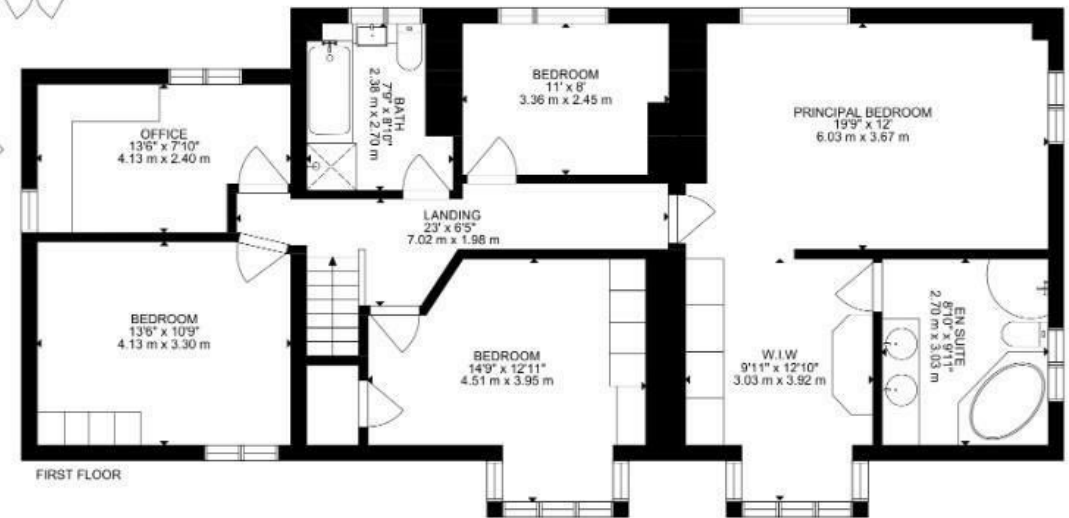
T
O

K
N
O
W

Sqft 2937.00 sq ft	Type House - Detached	Style Substantial And Characterful
Bedrooms 5	Receptions 2	Bathrooms 2
Tenure Freehold	Local Authority Epping	Tax Band H

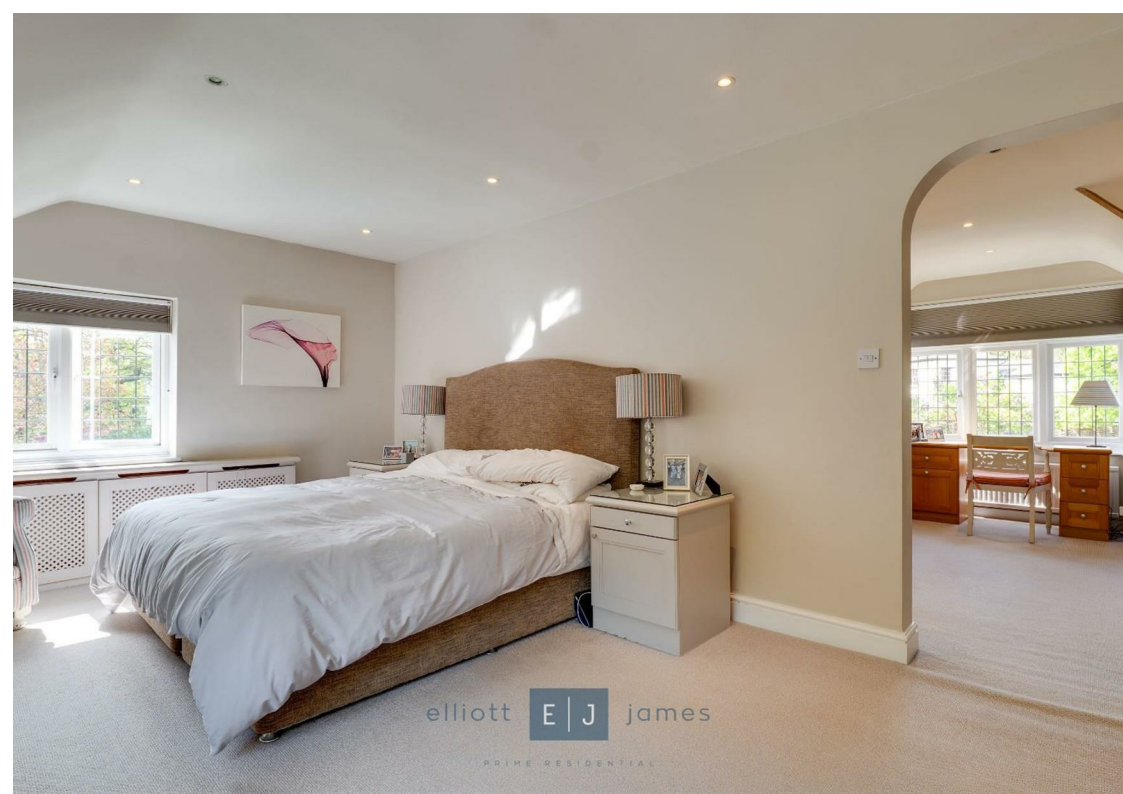


GROUND FLOOR

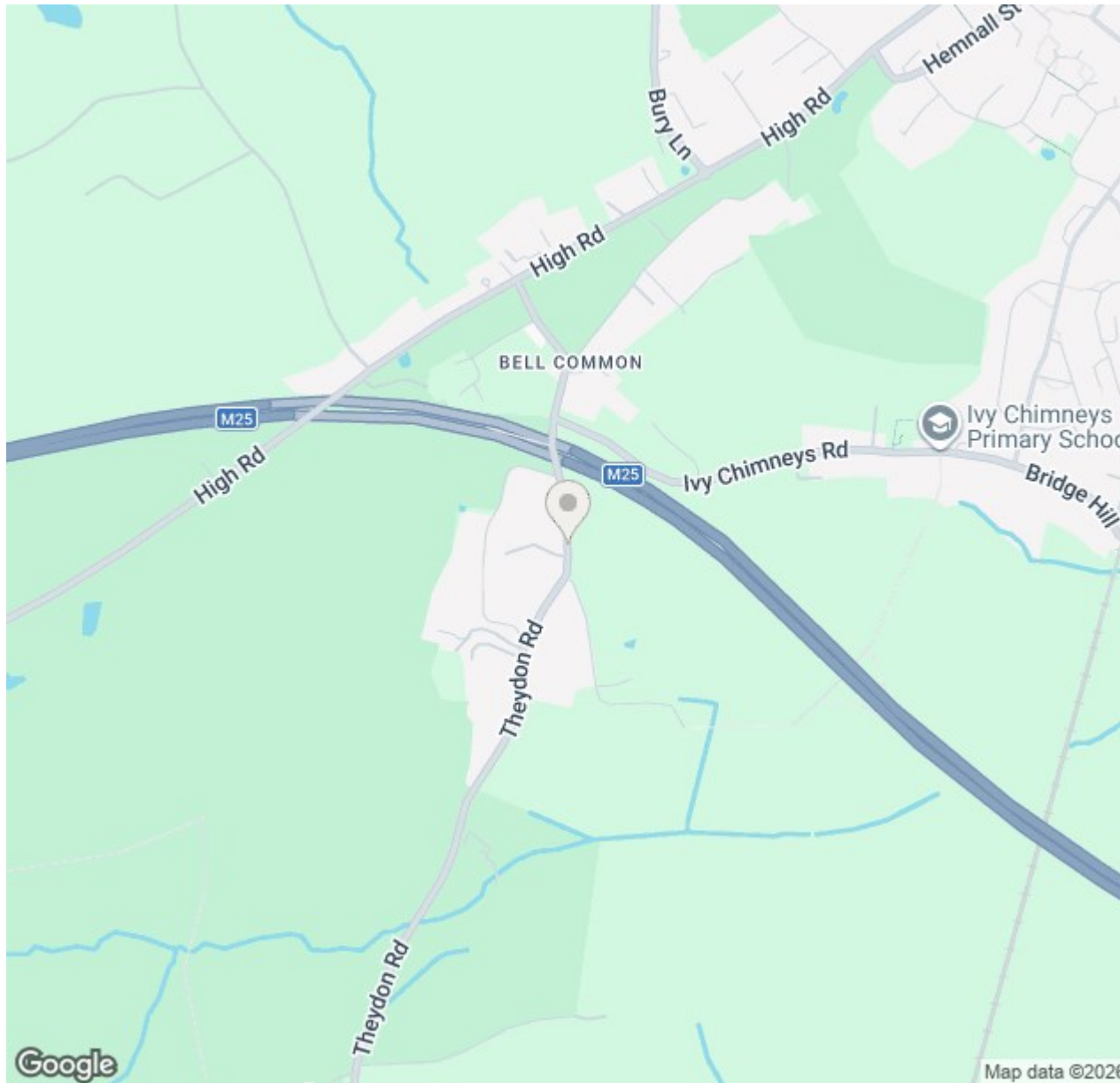


FIRST FLOOR

GROSS INTERNAL AREA
 GROUND FLOOR: 162 m², 1743 SQ FT, FIRST FLOOR: 111 m², 1194 SQ FT,
 TOTAL: 273 m², 2937 SQ FT
 SIZE AND DIMENSIONS ARE APPROXIMATE, ACTUAL MAY VARY



MAP & EPC



Energy Efficiency Rating			
	Current	Potential	
Very energy efficient - lower running costs			
(92 plus) A			
(81-91) B			
(69-80) C			
(55-68) D			
(39-54) E			
(21-38) F			
(1-20) G			
Not energy efficient - higher running costs			
England & Wales	EU Directive 2002/91/EC		

Environmental Impact (CO ₂) Rating			
	Current	Potential	
Very environmentally friendly - lower CO ₂ emissions			
(92 plus) A			
(81-91) B			
(69-80) C			
(55-68) D			
(39-54) E			
(21-38) F			
(1-20) G			
Not environmentally friendly - higher CO ₂ emissions			
England & Wales	EU Directive 2002/91/EC		

elliott **E | J** james

165 | High Road | Loughton | IG10 4LF

Contact Us : 0208 0165 333 | contact@ejpr.co.uk

Follow us on social media | Search 'ejpr165'



These particulars have been prepared with approximate measurements in good faith by Elliott James – Prime Residential with the assistance of the vendor. The intention is to provide a fair and accurate guide to the property. These details do not constitute or form any part of an offer or contract. All interested parties must verify for themselves the accuracy of the information provided. The structural condition of the property or the condition of the heating, plumbing or electrical installations or any appliances have not been checked or tested and suitable investigations by interested parties should be conducted prior to purchase.