



P R I M E R E S I D E N T I A L

P R E S E N T S

High Road, Loughton



E | J

High Road, Loughton

“ Nestled on the prestigious High Road in Loughton, this impressive detached house, built in 1997, offers a perfect blend of modern living and spacious comfort. With six well-appointed bedrooms, this property is ideal for families seeking ample space and privacy. Three of the bedrooms come complete with their own ensuite bathrooms, ensuring convenience and luxury for family members or guests.

The heart of the home is the open plan kitchen and living area, which creates a warm and inviting atmosphere, perfect for entertaining or enjoying family time. The design allows for a seamless flow between cooking, dining, and relaxation, making it a delightful space for everyday living.

In addition to the generous reception rooms, which provide versatile options for a study, playroom, or formal dining, the property also features a one-bedroom outbuilding. This additional space can serve as a guest suite, home office, or studio, catering to various lifestyle needs.

Parking is a breeze with ample space for multiple vehicles, complemented by the convenience of a substantial double garage, providing ample storage for vehicles and outdoor equipment.

Set in a desirable location, this home is not only a sanctuary of comfort but also a gateway to the vibrant community of Loughton, with its array of shops, schools, and recreational facilities. This property is a rare find, offering both luxury and practicality in a sought-after area. Don't miss the opportunity to make this exceptional house your new home.

”

The property market has always interested me and seeing the reaction when someone finds their next home is something that really drives me to go above and beyond. I have a pride in my local area having grown up here, this also allowed me to grow a strong knowledge of the local community. With experience in the role already I look to provide a service to both buyers and sellers in which communication and transparency are key. I am incredibly proud to be a part of such a brilliant team dedicated to providing bespoke service to such a beautiful community.



An unrestricted fully immersive walkthrough is available in our E|J Business Lounge by arrangement. Restricted walkthrough access is available on our website through your smartphone or desktop.

Daniel Thomas
contact@ejpr.co.uk
0208 0165 333

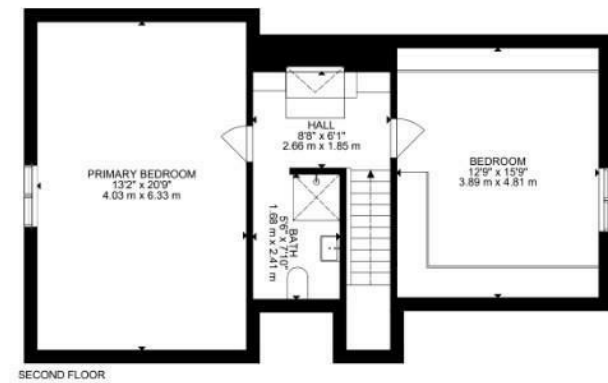
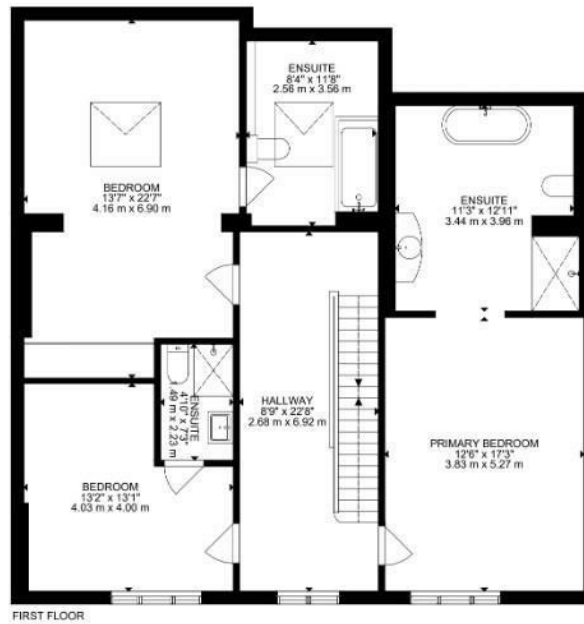
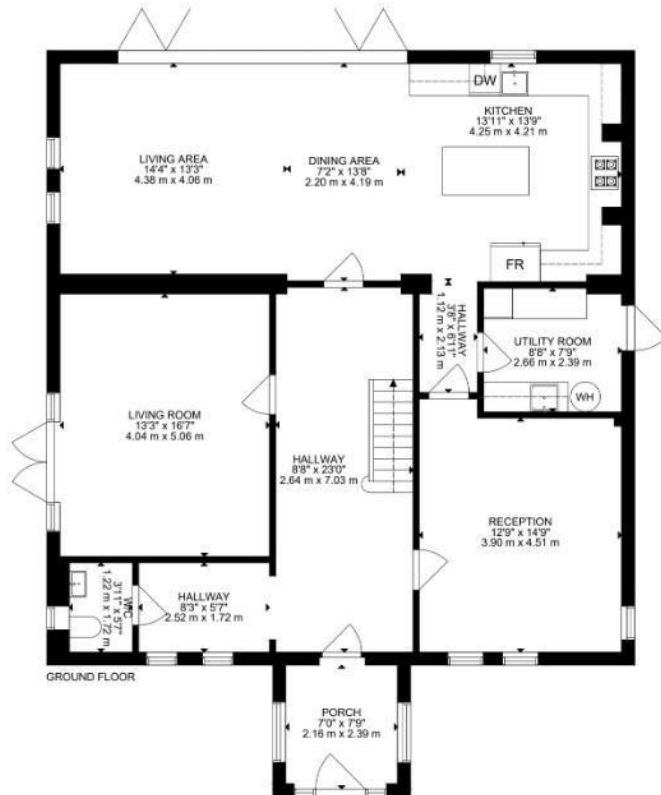
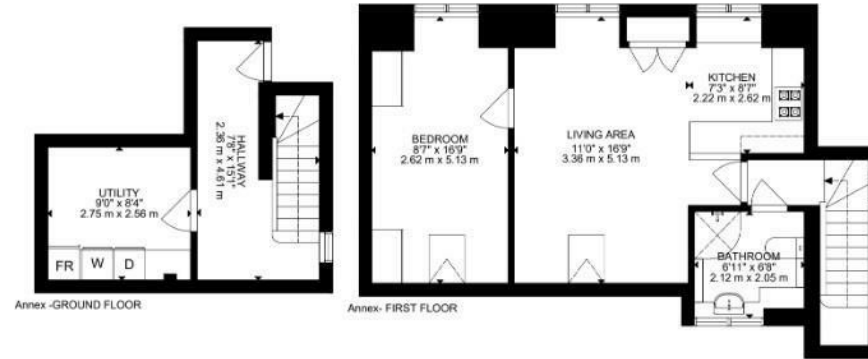
N
E
E
D

T
O

K
N
O
W

Sqft 4399.00 sq ft	Type House - Detached	Style Modern
Bedrooms 6	Receptions 3	Bathrooms 5
Tenure Freehold	Local Authority Epping Forest	Tax Band G

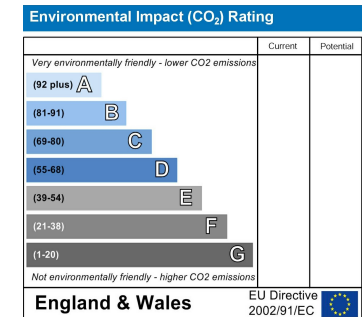
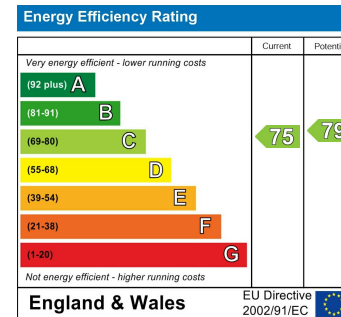
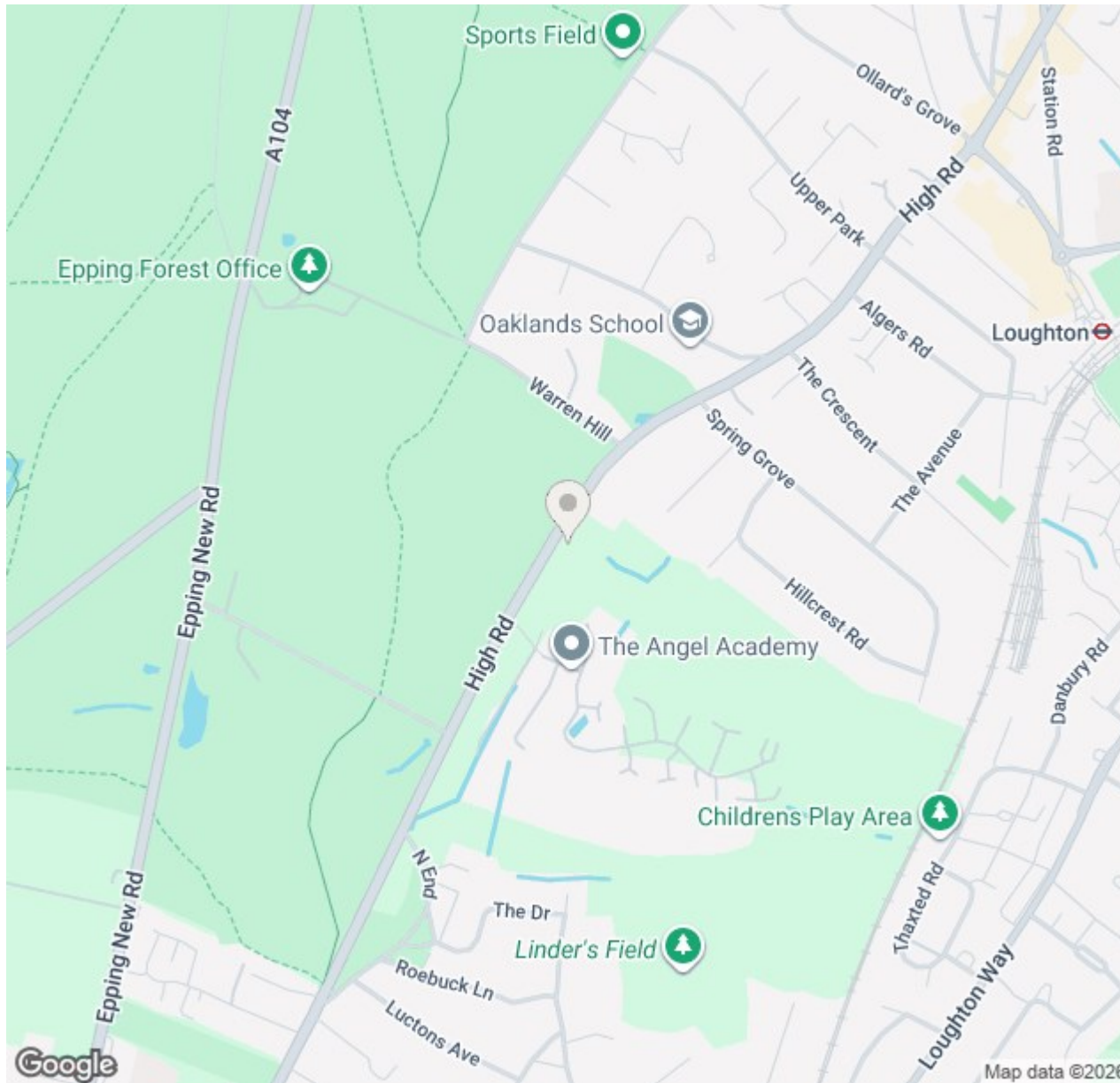
PLANS



GROSS INTERNAL AREA
 GROUND FLOOR: 1506 SQ FT, 140 m², FIRST FLOOR: 1313 SQ FT, 122 m², SECOND FLOOR: 742 SQ FT, 69 m²
 Annex- GROUND FLOOR: 236 SQ FT, 22 m², Annex- FIRST FLOOR: 602 SQ FT, 56 m²
 TOTAL: 4399 SQ FT, 409 m²
 SIZE AND DIMENSIONS ARE APPROXIMATE, ACTUAL MAY VARY



MAP & EPC



elliott  james

165 | High Road | Loughton | IG10 4LF

Contact Us : 0208 0165 333 | contact@ejpr.co.uk

Follow us on social media | Search 'ejpr165'



These particulars have been prepared with approximate measurements in good faith by Elliott James – Prime Residential with the assistance of the vendor. The intention is to provide a fair and accurate guide to the property. These details do not constitute or form any part of an offer or contract. All interested parties must verify for themselves the accuracy of the information provided. The structural condition of the property or the condition of the heating, plumbing or electrical installations or any appliances have not been checked or tested and suitable investigations by interested parties should be conducted prior to purchase.